

## Product datasheet for **TP326293M**

### Eph receptor A7 (EPHA7) (NM\_004440) Human Recombinant Protein

#### Product data:

**Product Type:** Recombinant Proteins  
**Description:** Recombinant protein of human EPH receptor A7 (EPHA7), 100 µg  
**Species:** Human  
**Expression Host:** HEK293T  
**Expression cDNA** >RC226293 representing NM\_004440  
**Clone or AA Sequence:** **Red**=Cloning site **Green**=Tags(s)

MVFQTRYPSWIILCYIWLLRFAHTGEAQAAKEVLLLD SKAQQTELEWISSPPNGWEEISGLDENYTPIRT  
YQVCQVMEPNQNNWLRTNWISKGNAQRIFVELKFTLRDCNSLPGVLGTCKETFNLYYYETDYDTGRNIRE  
NLVVKIDTIAADESFTQGD LGERKMKLNTEVREIGPLSKKGFYLA FQDVGACIALSVKVVYKCCWSIIE  
NLAIFPDTVTGSEFSSLVEVRGTCVSSAEEEAENAPRMHCSAEGEWLVPIGKCICKAGYQQKGDTCPECG  
RGFYKSSSQDLQCSRCPTHSFSDKEGSSRCECEDGYRAPSDPPYVACTRPPSAPQNLIFNINQTTVSLE  
WSPPADNGGRNDVTYRILCKRCSWEQGEVPCGSNIGYMPQQTGLEDNVYTVMDLLAHANYTFEVEAVNG  
VSDLRSRQLFAAVSITGQAAPSQVSGVMKERV LQRSVELSWQEPHPNGVITEYEIKYYEKDQRERTY  
STVKTKSTSASINNLKPGTVYVFQIRAF TAAGYGNYSRPLDVATLEEATGKMFEATAVSSQN PVIIIAV  
VAVAGTIILVFMVFGFIIGRRHCGYSKADQEGDEELYFHFKFPGT KYIDPETYEDPNRAVHQFAKELDA  
SCIKIERVIGAGEFGEVCSGRLKLPGRDVAVAIKTLKVGYTEKQRRDFLCEASIMGQFDHPNVVHLEGV  
VTRGKPMVIVIEFMENGALDAFLRKHDGQFTVIQLVGM LRGIAAGMRYLADMGYVHRDLAARNILVNSNL  
VCKVSDFGLSRVIEDDPEAVYTTTGKIPVRWTAPEAIQYRKFTS ASDVWSYGIVMWEVMSYGERPYWDM  
SNQDVKAIEEGYRLPAPMDCPAGLHQLMLDCWQKERAERP KFEQIVGILDKMIRNPNSLKTPLGTCSR P  
ISPLLDQNTPDFTTFCVSGEWLQAIKMERYKDNFTAAGYNSLESVARMTIEDVMSL GITLVGHQKKIMSS  
IQTMR AQMLHLHGTGIQV

**TRTRPLEQKLI SEEDLAANDILDYKDDDDKV**

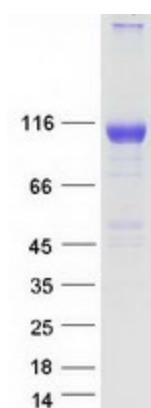
**Tag:** C-Myc/DDK  
**Predicted MW:** 111.9 kDa  
**Concentration:** >0.05 µg/µL as determined by microplate BCA method  
**Purity:** > 80% as determined by SDS-PAGE and Coomassie blue staining  
**Buffer:** 25 mM Tris-HCl, 100 mM glycine, pH 7.3, 10% glycerol



[View online »](#)

<b>Preparation:</b>	Recombinant protein was captured through anti-DDK affinity column followed by conventional chromatography steps.
<b>Note:</b>	For testing in cell culture applications, please filter before use. Note that you may experience some loss of protein during the filtration process.
<b>Storage:</b>	Store at -80°C.
<b>Stability:</b>	Stable for 12 months from the date of receipt of the product under proper storage and handling conditions. Avoid repeated freeze-thaw cycles.
<b>RefSeq:</b>	<a href="#">NP_004431</a>
<b>Locus ID:</b>	2045
<b>UniProt ID:</b>	<a href="#">Q15375</a>
<b>Cytogenetics:</b>	6q16.1
<b>RefSeq ORF:</b>	2994
<b>Synonyms:</b>	EHK-3; EHK3; EK11; HEK11
<b>Summary:</b>	This gene belongs to the ephrin receptor subfamily of the protein-tyrosine kinase family. EPH and EPH-related receptors have been implicated in mediating developmental events, particularly in the nervous system. Receptors in the EPH subfamily typically have a single kinase domain and an extracellular region containing a Cys-rich domain and 2 fibronectin type III repeats. The ephrin receptors are divided into 2 groups based on the similarity of their extracellular domain sequences and their affinities for binding ephrin-A and ephrin-B ligands. Increased expression of this gene is associated with multiple forms of carcinoma. Alternative splicing results in multiple transcript variants. [provided by RefSeq, Dec 2013]
<b>Protein Families:</b>	Druggable Genome, Protein Kinase, Transmembrane
<b>Protein Pathways:</b>	Axon guidance

### Product images:



Coomassie blue staining of purified EPHA7 protein (Cat# [TP326293]). The protein was produced from HEK293T cells transfected with EPHA7 cDNA clone (Cat# [RC226293]) using MegaTran 2.0 (Cat# [TT210002]).