

Product datasheet for TP326293L

Eph receptor A7 (EPHA7) (NM_004440) Human Recombinant Protein

Product data:

Product Type: Recombinant Proteins
Description: Recombinant protein of human EPH receptor A7 (EPHA7), 1 mg
Species: Human
Expression Host: HEK293T
Expression cDNA >RC226293 representing NM_004440
Clone or AA Sequence: Red=Cloning site Green=Tags(s)

MVFQTRYPSWIILCYIWLLRFAHTGEAQAAKEVLLLD SKAQQTELEWISSPPNGWEEISGLDENYTPIRT
 YQVCQVMEPNQNNWLRTNWISKGNAQRIFVELKFTLRDCNSLPGVLGTCKETFNLYYYETDYDTGRNIRE
 NLYVKIDTIAADESFTQGD LGERKMKLNTEVREIGPLSKKGFYLA FQDVGACIALSVKVVYKCCWSIIE
 NLAIFPDTVTGSEFSSLVEVRGTCVSSAEEEAENAPRMHCSAEGEWLVPIGKCICKAGYQQKGDTCPECG
 RGFYKSSSQDLQCSRCPTH SFSDEKSSRCECEDGYRAPSDPPYVACTRPPSAPQNLIFNINQTTVSLE
 WSPPADNGGRNDVTYRILCKRCSWEQGEVPCGSNIGYMPQQTGLEDNVYTVMDLLAHANYTFEVEAVNG
 VSDLRSRQLFAAVSITGQAAPSQVSGVMKERV LQRSVELSWQEP EHPNGVITEYEIKYYEKDQRERTY
 STVKTKSTSASINNLKPGTVYVFQIRAF TAAGYGNYSRPLDVATLEEATGKMFEATAVSSEQNPVHIAV
 VAVAGTIILVFMVFGFIIGRRHCGYSKADQEGDEELYFHFKFPGTKTYIDPETYEDPNRAVHQFAKELDA
 SCIKIERVIGAGEFGVCSGRLKLP GKRDVAVAIKTLKVGYTEKQRRDFLCEASIMGQFDHPNVVHLEGV
 VTRGKPMVIVIEFMENGALDAFLRKHDGQFTVIQLVGM LRGIAAGMRYLADMGYVHRDLAARNILVNSNL
 VCKVSDFGLSRVIEDDPEAVYTTTGKIPVRWTAPEAIQYRKFTSASDVWSYGIVMWEVMSYGERPYWDM
 SNQDVKAIEEGYRLPAPMDCPAGLHQLMLDCWQKERAERP KFEQIVGILDKMIRNPNSLKTPLGTCSR
 PISPLLDQNTPDFTTFCVSGEWLQAIKMERYKDNFTAAGYNSLESVARMTIEDVMSLGITLVGHQKKIMSS
 IQTMRAQMLHLHGTGIQV

TRTRPLEQKLI SEEDLAANDILDYKDDDDKV

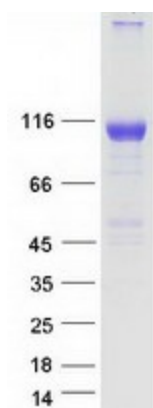
Tag: C-Myc/DDK
Predicted MW: 111.9 kDa
Concentration: >0.05 µg/µL as determined by microplate BCA method
Purity: > 80% as determined by SDS-PAGE and Coomassie blue staining
Buffer: 25 mM Tris-HCl, 100 mM glycine, pH 7.3, 10% glycerol



[View online »](#)

Preparation:	Recombinant protein was captured through anti-DDK affinity column followed by conventional chromatography steps.
Note:	For testing in cell culture applications, please filter before use. Note that you may experience some loss of protein during the filtration process.
Storage:	Store at -80°C.
Stability:	Stable for 12 months from the date of receipt of the product under proper storage and handling conditions. Avoid repeated freeze-thaw cycles.
RefSeq:	NP_004431
Locus ID:	2045
UniProt ID:	Q15375
Cytogenetics:	6q16.1
RefSeq ORF:	2994
Synonyms:	EHK-3; EHK3; EK11; HEK11
Summary:	This gene belongs to the ephrin receptor subfamily of the protein-tyrosine kinase family. EPH and EPH-related receptors have been implicated in mediating developmental events, particularly in the nervous system. Receptors in the EPH subfamily typically have a single kinase domain and an extracellular region containing a Cys-rich domain and 2 fibronectin type III repeats. The ephrin receptors are divided into 2 groups based on the similarity of their extracellular domain sequences and their affinities for binding ephrin-A and ephrin-B ligands. Increased expression of this gene is associated with multiple forms of carcinoma. Alternative splicing results in multiple transcript variants. [provided by RefSeq, Dec 2013]
Protein Families:	Druggable Genome, Protein Kinase, Transmembrane
Protein Pathways:	Axon guidance

Product images:



Coomassie blue staining of purified EPHA7 protein (Cat# [TP326293]). The protein was produced from HEK293T cells transfected with EPHA7 cDNA clone (Cat# [RC226293]) using MegaTran 2.0 (Cat# [TT210002]).