

Product datasheet for TP326285L

SYNPO2L (NM_001114133) Human Recombinant Protein

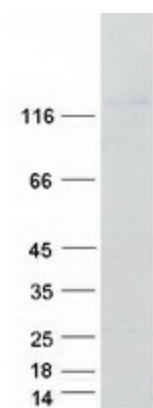
Product data:

Product Type:	Recombinant Proteins
Description:	Purified recombinant protein of Homo sapiens synaptopodin 2-like (SYNPO2L), transcript variant 1, 1 mg
Species:	Human
Expression Host:	HEK293T
Expression cDNA Clone or AA Sequence:	>RC226285 representing NM_001114133 Red =Cloning site Green =Tags(s)
	<p>MGAEEEVLVTLSSGGAPWGFRLHGGAEQRKPLQVSKIRRRSQAGRAGLRERDQLLAINGVSCNLSHASAM SLIDASGNQLVLTQRLADEGPVQSPSPHELQVLSPLSPLSPEPPGAPVPQPLQPGSLRSPDSEAYYGE TDSADGPATQEKRPRRRGTRPTPPGAPPDEVYLSDSAEPAPTIPGPPSQGDSRVSSPSWEDGAAL QPPPAEALLPHGPLRPGPHLIPMVGPVPHVAEDLTTTYTQKAKQAKLQRAESLQEKSIEAKTKCRTI ASLLTAAPNPHSKGVLMMFKRRQRAKKYTLVSFGAAAGTGAEEDGVPPTSESELDEEAFSDARSLTNQS DWDSPLYLDMELARAGSRASEGQGSGLGGQLSEVSGRGVQLFEQQRQRADSSTQELARVPAAMLNAGEGLQ SPPRAQSAPPEAAVLPPSPLPAPVASPRPFQPGGGAPTAPSFNRSARPFPTGLQGQRPTTTSVIFRPL APKRANDSLGLSPAPPFLSSQGPTPLPSFTSGVPSHAPVSGSPSTPRSSGPVTATSSLYIPAPSRPVT PGGAPEPPAPPSAAAMTSTASIFLSAPLRPSARPEAPGPGAPEPPSAREQRISVPAARTGILQEARRR GTRKQMFPRGKEETKNSPNPELLSLVQNLDEKPRAGGAESGPEEDALS LGAEACNFMQPVGARSYKTLPH VTPKTPPPMAPKTPPMTPKTPPPVAPKPPSRGLLDGLVNGAASSAGIPEPRLQGRGGELFAKRQSRAD RYVVEGTPGPGGLGPRRSPSPTPSLPPSWKYSPNIRAPPIAYNPLLSPFFPQAARTLPKAQSQGPRATP KQGKALDFMRHQPYQLKTAMFCFDEVPTPGPIASGSPKTARVQEIRRFSTPAPQPTAEPLAPTVLAPR AATTLDEPIWRTELASAPVPSAPPPEAPRGLGASPSGCFQVARPRFSATRTGLQAHVWRPGAGHQ</p> <p>TRTRPLEQKLISEEDLAANDILDYKDDDDKV</p>
Tag:	C-Myc/DDK
Predicted MW:	102.3 kDa
Concentration:	>0.05 µg/µL as determined by microplate BCA method
Purity:	> 80% as determined by SDS-PAGE and Coomassie blue staining
Buffer:	25 mM Tris-HCl, 100 mM glycine, pH 7.3, 10% glycerol



[View online »](#)

Preparation:	Recombinant protein was captured through anti-DDK affinity column followed by conventional chromatography steps.
Note:	For testing in cell culture applications, please filter before use. Note that you may experience some loss of protein during the filtration process.
Storage:	Store at -80°C.
Stability:	Stable for 12 months from the date of receipt of the product under proper storage and handling conditions. Avoid repeated freeze-thaw cycles.
RefSeq:	<u>NP_001107605</u>
Locus ID:	79933
UniProt ID:	<u>Q9H987</u>
Cytogenetics:	10q22.2
RefSeq ORF:	2931
Summary:	Actin-associated protein that may play a role in modulating actin-based shape.[UniProtKB/Swiss-Prot Function]

Product images:

Coomassie blue staining of purified SYNPO2L protein (Cat# [TP326285]). The protein was produced from HEK293T cells transfected with SYNPO2L cDNA clone (Cat# [RC226285]) using MegaTran 2.0 (Cat# [TT210002]).