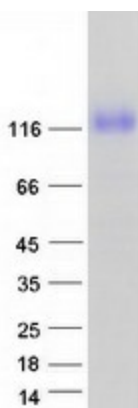




<b>Note:</b>	For testing in cell culture applications, please filter before use. Note that you may experience some loss of protein during the filtration process.
<b>Storage:</b>	Store at -80°C.
<b>Stability:</b>	Stable for 12 months from the date of receipt of the product under proper storage and handling conditions. Avoid repeated freeze-thaw cycles.
<b>RefSeq:</b>	<a href="#">NP_001107571</a>
<b>Locus ID:</b>	26470
<b>UniProt ID:</b>	<a href="#">Q6UXD5</a> , <a href="#">Q6UXD5-2</a>
<b>Cytogenetics:</b>	16p11.2
<b>RefSeq ORF:</b>	2520
<b>Synonyms:</b>	BSRPA; PSK-1
<b>Summary:</b>	This gene encodes a seizure-related protein that is localized on the cell surface. The gene is located in a region of chromosome 16p11.2 that is thought to contain candidate genes for autism spectrum disorders (ASD), though there is no evidence directly implicating this gene in ASD. Increased expression of this gene has been found in lung cancers, and the protein is therefore considered to be a novel prognostic marker for lung cancer. Alternative splicing of this gene results in multiple transcript variants. [provided by RefSeq, Aug 2011]
<b>Protein Families:</b>	Druggable Genome, Transmembrane

### Product images:



Coomassie blue staining of purified SEZ6L2 protein (Cat# [TP326207]). The protein was produced from HEK293T cells transfected with SEZ6L2 cDNA clone (Cat# [RC226207]) using MegaTran 2.0 (Cat# [TT210002]).