

## Product datasheet for **TP326207L**

### SEZ6L2 (NM\_001114099) Human Recombinant Protein

#### Product data:

Product Type:	Recombinant Proteins
Description:	Purified recombinant protein of Homo sapiens seizure related 6 homolog (mouse)-like 2 (SEZ6L2), transcript variant 3, 1 mg
Species:	Human
Expression Host:	HEK293T
Expression cDNA	>RC226207 representing NM_001114099
Clone or AA Sequence:	Red=Cloning site Green=Tags(s)

MGTPRAQHPPPPQLLFLILLSCPWIQGLPLKEEEILPEPGSETPTVASEALAE LLHGALLRRGPEMGYLP  
GPPLGPEGGEEETTTTITTTTITTTVTSPVLCNNNISEGEGYVESPD LGSPVSR TLGLLDCTYSIHVYP  
GYGIEIQVQTLNLSQEEELLVLGGGSPGLAPRLLANSSMLGEGQVLRSP TNRLLLHFQSPRVPRGGGFR  
IHYQAYLLSCGFPPRPAHGDVSVTDLHPGGTATFHCD SGYQLQGEETLICLN GTRPSWNGETPSCMASCG  
GTIHNATLGRIVSPEPGGAVGNLTCRWVIEAAEGRRLLHLHFERVSLDE DNDRLMVRSGGSPSPVIYDS  
DMDDVPERGLISDAQSLYVELLSETPANPLLLSLRFEAFEEDRCFAPFLA HGNVT TTDPEYRPGALATFS  
CLPGYALEPPGPPNAIECVDPTEPHWNDTEPACKAMCGGELSEPAGVVLSP DWPQSYSPGQDCVWGVHVQ  
EEKRILLQVEILNVREGDMLTLFDGDGPSARVLAQLRGPQPRRLLSSGPD LTLQFQAPPGPPNPGLGQG  
FVLHFKEVPRNDTCPELPPPEWGWRTASHGDLIRGTVLTYQCEPGYELLGSD ILCQWDLWSAAPPACQ  
KIMTCADPGEIANGHRTASDAGFPVGS HVQYRCLPGYSLEGAAMLTCYSRDTGTPKWSDRVPKCALKYEP  
CLNPGVPENGYQTLYKH HYQAGESLRF CYEGFELIGEVTITCVPGHPSQWTSQPPLCKVTQT TDP SRQL  
EGGNLALAILLPLGLVIVL GSGVYIYTKLQGKSLFGFSGSHSYSPITVESDFSNPLYEAGDTREYEVSI

TRTRPLEQKLISEEDLAANDILDYKDDDDKV

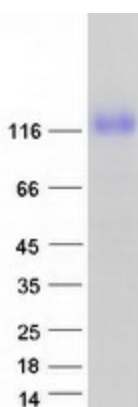
Tag:	C-Myc/DDK
Predicted MW:	90.7 kDa
Concentration:	>0.05 µg/µL as determined by microplate BCA method
Purity:	> 80% as determined by SDS-PAGE and Coomassie blue staining
Buffer:	25 mM Tris-HCl, 100 mM glycine, pH 7.3, 10% glycerol
Preparation:	Recombinant protein was captured through anti-DDK affinity column followed by conventional chromatography steps.



[View online »](#)

<b>Note:</b>	For testing in cell culture applications, please filter before use. Note that you may experience some loss of protein during the filtration process.
<b>Storage:</b>	Store at -80°C.
<b>Stability:</b>	Stable for 12 months from the date of receipt of the product under proper storage and handling conditions. Avoid repeated freeze-thaw cycles.
<b>RefSeq:</b>	<a href="#">NP_001107571</a>
<b>Locus ID:</b>	26470
<b>UniProt ID:</b>	<a href="#">Q6UXD5</a> , <a href="#">Q6UXD5-2</a>
<b>Cytogenetics:</b>	16p11.2
<b>RefSeq ORF:</b>	2520
<b>Synonyms:</b>	BSRPA; PSK-1
<b>Summary:</b>	This gene encodes a seizure-related protein that is localized on the cell surface. The gene is located in a region of chromosome 16p11.2 that is thought to contain candidate genes for autism spectrum disorders (ASD), though there is no evidence directly implicating this gene in ASD. Increased expression of this gene has been found in lung cancers, and the protein is therefore considered to be a novel prognostic marker for lung cancer. Alternative splicing of this gene results in multiple transcript variants. [provided by RefSeq, Aug 2011]
<b>Protein Families:</b>	Druggable Genome, Transmembrane

### Product images:



Coomassie blue staining of purified SEZ6L2 protein (Cat# [TP326207]). The protein was produced from HEK293T cells transfected with SEZ6L2 cDNA clone (Cat# [RC226207]) using MegaTran 2.0 (Cat# [TT210002]).