

## Product datasheet for **TP326180L**

### **LRR8A (NM\_001127244) Human Recombinant Protein**

#### **Product data:**

<b>Product Type:</b>	Recombinant Proteins
<b>Description:</b>	Recombinant protein of human leucine rich repeat containing 8 family, member A (LRR8A), transcript variant 1, 1 mg
<b>Species:</b>	Human
<b>Expression Host:</b>	HEK293T
<b>Expression cDNA Clone or AA Sequence:</b>	>RC226180 protein sequence <b>Red</b> =Cloning site <b>Green</b> =Tags(s)

MIPVTELRVFADTQPAYRILKPWWVDVFTDYISIVMLMIAVFGGTLQVTQDKMICLPCKWVKDSCNDSFR  
GWAAPGPEPTYPNSTILPTDGTGPTGIKYDLDRHQYNYVDAVCYENRLHWFAYFPYLVLHLIFLACS  
NFWFKFPRSSKLEHFSILLKCFDSPWTRALSETVVEESDPKPAFSKMNGSMDKKSSTVSEDVEATVP  
MLQRTKSRIEQGIVDRSETGVLDKKEGEQAKALFEKVKKFRTHVEEGDIVRLYMRQTIKVIKILIC  
YTVYVHNIKFDVDCTVDIESLTGYRTRYCAHPLATLFKILASFYISLVIFYGLICMYTLWWMLRRSLKK  
YSFESIREESSYSDIPDVKNDFAFMLHLIDQYDPLYSKRFVFLSEVSENKLRQLNLNNEWTLDKLRQRL  
TKNAQDKLELHFLMSGIPDVFDFLVELEVLKLELIPDVTIPPSIAQLTGLKELWLHYHTAAKIEAPALAF  
LRENLRALHIKFTDIKEIPLWIYSLKLEELHLTGNLSAENNRIVIDGLRELKRLKVLRLKSNLSKLPQ  
VWTDVGVHLQKLSINNEGKLVNLSLKKMANLTELELIRCDLERIPHSIFSLHNLQEIDLKDNLLKTI  
EISFQHLHRLTCLKLWYNHAIYIPIQIGNLTNLERLYLNRNKIEKIPTQLFYCRKRLRYLDLSHNNLTF  
PADIGLLQNLQNLAITANRIETLPPFLFQCRKLRALHLGNVQLQSLPSRVGELTNLTQIELRGNRLECLP  
VELGECPLLKRSGLVVEEDLFNTLPPEVKERLWRADKEQA

**TRTRPLEQKLISEEDLAANDILDYKDDDDKV**

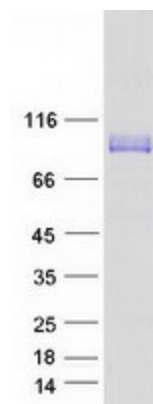
<b>Tag:</b>	C-Myc/DDK
<b>Predicted MW:</b>	94 kDa
<b>Concentration:</b>	>0.05 µg/µL as determined by microplate BCA method
<b>Purity:</b>	> 80% as determined by SDS-PAGE and Coomassie blue staining
<b>Buffer:</b>	25 mM Tris-HCl, 100 mM glycine, pH 7.3, 10% glycerol
<b>Preparation:</b>	Recombinant protein was captured through anti-DDK affinity column followed by conventional chromatography steps.



[View online »](#)

<b>Note:</b>	For testing in cell culture applications, please filter before use. Note that you may experience some loss of protein during the filtration process.
<b>Storage:</b>	Store at -80°C.
<b>Stability:</b>	Stable for 12 months from the date of receipt of the product under proper storage and handling conditions. Avoid repeated freeze-thaw cycles.
<b>RefSeq:</b>	<a href="#">NP_001120716</a>
<b>Locus ID:</b>	56262
<b>UniProt ID:</b>	<a href="#">Q8IWT6</a> , <a href="#">A0A024R892</a> , <a href="#">A8K1C7</a>
<b>RefSeq Size:</b>	4637
<b>Cytogenetics:</b>	9q34.11
<b>RefSeq ORF:</b>	2430
<b>Synonyms:</b>	AGM5; HsLRRC8A; LRRC8; SWELL1
<b>Summary:</b>	This gene encodes a protein belonging to the leucine-rich repeat family of proteins, which are involved in diverse biological processes, including cell adhesion, cellular trafficking, and hormone-receptor interactions. This family member is a putative four-pass transmembrane protein that plays a role in B cell development. Defects in this gene cause autosomal dominant non-Bruton type agammaglobulinemia, an immunodeficiency disease resulting from defects in B cell maturation. Multiple alternatively spliced transcript variants, which encode the same protein, have been identified for this gene. [provided by RefSeq, Jul 2008]
<b>Protein Families:</b>	Transmembrane

### Product images:



Coomassie blue staining of purified LRRC8A protein (Cat# [TP326180]). The protein was produced from HEK293T cells transfected with LRRC8A cDNA clone (Cat# [RC226180]) using MegaTran 2.0 (Cat# [TT210002]).