

Product datasheet for TP326180

LRR8A (NM_001127244) Human Recombinant Protein

Product data:

Product Type:	Recombinant Proteins
Description:	Recombinant protein of human leucine rich repeat containing 8 family, member A (LRR8A), transcript variant 1, 20 µg
Species:	Human
Expression Host:	HEK293T
Expression cDNA Clone or AA Sequence:	>RC226180 protein sequence Red=Cloning site Green=Tags(s)

MIPVTELRVFADTQPAYRILKPWWVDVFTDYISIVMLMIAVFGGTLQVTQDKMICLPCKWVTKDSCNDSFR
GWAAPGPEPTYPNSTILPTDGTGPTGIKYDLDRHQYNYVDAVCYENRLHWFAYFPYLVLHLIFLACS
NFWFKFPRSSKLEHFSILLKCFDSPWTRALSETVVEESDPKPAFSKMNGSMDKKSSTVSEDVEATVP
MLQRTKSRIEQGIVDRSETGVLDKKEGEQAKALFEKVKKFRTHVEEGDIVRLYMRQTIKVIKILIC
YTVVYVHNKFDVDCTVDIESLTGYRTYRCAHPLATLFKILASFYISLVIFYGLICMYTLWWMLRRSLKK
YSFESIREESSYSDIPDVKNDFAFMLHLIDQYDPLYSKRFVFLSEVSENKLRQLNLNNEWTLDKLRQRL
TKNAQDKLELHFLMSGIPDVFDFLVELEVLKLELIPDVTIPPSIAQLTGLKELWLYHTAAKIEAPALAF
LRENLRALHIKFTDIKEIPLWIYSLKLEELHLTGNLSAENNRIVIDGLRELKRLKVLRLKSNLSKLPQ
VWTDVGVHLQKLSINNEGKLVNLSLKKMANLTELIRCDLERIPHSIFSLHNLQEIDLKDNLNKLTIE
EISFQHLHRLTCLKLWYNHAIYIPIQIGNLTNLERLYLNRNKIEKIPTQLFYCRKRLRYDLDSHNNLTF
PADIGLLQNLQNLAITANRIETLPELFCRKLRLHGLGNNVLQSLPSRVGELTNLTQIELRGNRLECLP
VELGECPLLKRSGLVVEEDLFNTLPPEVKERLWRADKEQA

TRTRPLEQKLISEEDLAANDILDYKDDDDKV

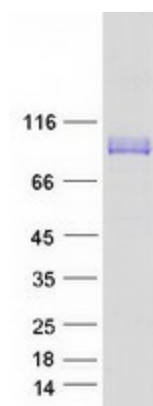
Tag:	C-Myc/DDK
Predicted MW:	94 kDa
Concentration:	>0.05 µg/µL as determined by microplate BCA method
Purity:	> 80% as determined by SDS-PAGE and Coomassie blue staining
Buffer:	25 mM Tris-HCl, 100 mM glycine, pH 7.3, 10% glycerol
Preparation:	Recombinant protein was captured through anti-DDK affinity column followed by conventional chromatography steps.



[View online »](#)

Note:	For testing in cell culture applications, please filter before use. Note that you may experience some loss of protein during the filtration process.
Storage:	Store at -80°C.
Stability:	Stable for 12 months from the date of receipt of the product under proper storage and handling conditions. Avoid repeated freeze-thaw cycles.
RefSeq:	NP_001120716
Locus ID:	56262
UniProt ID:	Q8IWT6 , A0A024R892 , A8K1C7
RefSeq Size:	4637
Cytogenetics:	9q34.11
RefSeq ORF:	2430
Synonyms:	AGM5; HsLRRC8A; LRRC8; SWELL1
Summary:	This gene encodes a protein belonging to the leucine-rich repeat family of proteins, which are involved in diverse biological processes, including cell adhesion, cellular trafficking, and hormone-receptor interactions. This family member is a putative four-pass transmembrane protein that plays a role in B cell development. Defects in this gene cause autosomal dominant non-Bruton type agammaglobulinemia, an immunodeficiency disease resulting from defects in B cell maturation. Multiple alternatively spliced transcript variants, which encode the same protein, have been identified for this gene. [provided by RefSeq, Jul 2008]
Protein Families:	Transmembrane

Product images:



Coomassie blue staining of purified LRRC8A protein (Cat# TP326180). The protein was produced from HEK293T cells transfected with LRRC8A cDNA clone (Cat# [RC226180]) using MegaTran 2.0 (Cat# [TT210002]).