

## Product datasheet for TP326157L

### CD18 (ITGB2) (NM\_001127491) Human Recombinant Protein

#### Product data:

Product Type:	Recombinant Proteins
Description:	Purified recombinant protein of Homo sapiens integrin, beta 2 (complement component 3 receptor 3 and 4 subunit) (ITGB2), transcript variant 2, 1 mg
Species:	Human
Expression Host:	HEK293T
Expression cDNA Clone or AA Sequence:	>RC226157 representing NM_001127491 Red=Cloning site Green=Tags(s)

MLGLRPPLLALVGLLSLGCVLSQECTKFKVSSCRECIESGPGCTWCQKLNFTGPGDPDSIRCDTRPQLLM  
RGCAADDIMDPTSLAETQEDHNGGQKQLSPQKVTLYLRPGQAAAFNVTFRRAKGYPIDLYLMDLSYSML  
DDLNRVKKLGGDLLRALNEITESGRIGFGSFVDKTVLPFVNTHPDKLRNPCNKEKECQPPFAFRHVLKL  
TNNSNQFQTEVGKQLISGNLDAPEGGLDAMMQVAACEEIGWRNVTRLLVFATDDGFHFAGDGKLGAILT  
PNDGRCHLEDNLYKRSNEFDYPSVQLAHKLAENNIQPIFAVTSRMVKTYEKLTEIIPKSAVGELSEDSS  
NVVQLIKNAYNKLSSRVFLDHNALPDTLKVTYDSFCSNGVTHRNQPRGDCDGVQINVPITFQVKVTATEC  
IQEQSFVIRALGFTDIVTVQVLPQCECRCRDQSRDRSLCHGKGFLECGICRCDTGYIGKNCECQTQGRSS  
QELEGSCRKDNNSIICSLGDCVCGQCLCHTSDVPGLIYGQYCECDTINCERYNGQVCGGPGRGLCFGC  
KCRCHPGFEFSACQCERTTEGCLNPRRVECSGRGRRCNVCECHSGYQLPLCQCECPGCPSPCKGKISCAE  
CLKFEKGPFGKNCSAACPLQLSNNPVKGRGCKERDSEGCWVAYTLEQQDGMDRYLIYVDESRECVAGPN  
IAAIVGGTVAGIVLIGILLLVWIKALIHLSDLREYRRFEKEKLSQWNNNDNPLFKSATTVMNPKFAES

TRTRPLEQKLISEEDLAANDILDYKDDDDKV

Tag:	C-Myc/DDK
Predicted MW:	82.5 kDa
Concentration:	>0.05 µg/µL as determined by microplate BCA method
Purity:	> 80% as determined by SDS-PAGE and Coomassie blue staining
Buffer:	25 mM Tris-HCl, 100 mM glycine, pH 7.3, 10% glycerol
Bioactivity:	Far-Western blot (PMID: <a href="#">26600301</a> ) ELISA binding assay (PMID: <a href="#">29125705</a> )
Preparation:	Recombinant protein was captured through anti-DDK affinity column followed by conventional chromatography steps.



[View online »](#)

**Note:** For testing in cell culture applications, please filter before use. Note that you may experience some loss of protein during the filtration process.

**Storage:** Store at -80°C.

**Stability:** Stable for 12 months from the date of receipt of the product under proper storage and handling conditions. Avoid repeated freeze-thaw cycles.

**RefSeq:** [NP\\_001120963](#)

**Locus ID:** 3689

**UniProt ID:** [P05107](#), [A0A494C0X7](#)

**Cytogenetics:** 21q22.3

**RefSeq ORF:** 2307

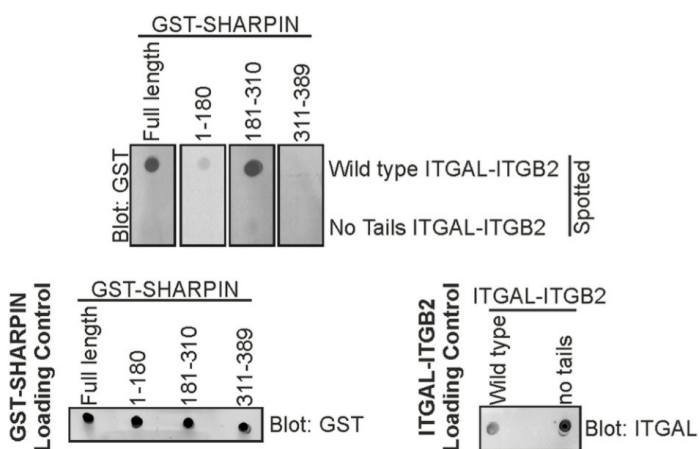
**Synonyms:** CD18; LAD; LCAMB; LFA-1; MAC-1; MF17; MFI7

**Summary:** This gene encodes an integrin beta chain, which combines with multiple different alpha chains to form different integrin heterodimers. Integrins are integral cell-surface proteins that participate in cell adhesion as well as cell-surface mediated signalling. The encoded protein plays an important role in immune response and defects in this gene cause leukocyte adhesion deficiency. Alternative splicing results in multiple transcript variants. [provided by RefSeq, Dec 2014]

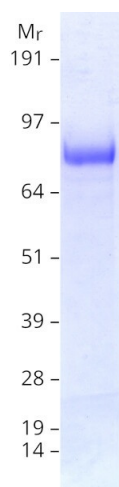
**Protein Families:** Druggable Genome, Transmembrane

**Protein Pathways:** Cell adhesion molecules (CAMs), Leukocyte transendothelial migration, Natural killer cell mediated cytotoxicity, Regulation of actin cytoskeleton, Viral myocarditis

### Product images:



The UBL domain (181-310) of SHARPIN mediates binding to cytoplasmic tails of integrin, as analyzed by Far-Western of GST-SHARPIN (full-length or fragments) binding to full-length ITGAL-ITGB2 (OriGene [TP321297] and [TP326157]) or ITGAL-ITGB2 lacking both cytoplasmic tails. Loading controls for GST-SHARPIN (full-length or fragments) and both ITGAL-ITGB2s are shown. Figure cited from PLoS ONE, PMID: 26600301



Coomassie blue staining of purified ITGB2 protein (Cat# [TP326157]). The protein was produced from HEK293T cells transfected with ITGB2 cDNA clone (Cat# [RC226157]) using MegaTran 2.0 (Cat# [TT210002]).