

Product datasheet for TP326157

CD18 (ITGB2) (NM_001127491) Human Recombinant Protein

Product data:

Product Type:	Recombinant Proteins
Description:	Purified recombinant protein of Homo sapiens integrin, beta 2 (complement component 3 receptor 3 and 4 subunit) (ITGB2), transcript variant 2, 20 µg
Species:	Human
Expression Host:	HEK293T
Expression cDNA Clone or AA Sequence:	>RC226157 representing NM_001127491 Red =Cloning site Green =Tags(s)

MLGLRPPLLALVGLLSLGCVLSQECTKFKVSSCRECIESGPGCTWCQKLNFTGPGDPDSIRCDTRPQLLM
RGCAADDIMDPTSLAETQEDHNGGQKQLSPQKVTLYLRPGQAAAFNVTFRRAKGYPIDLYYLMDSYSML
DDLNRNVKKLGGDLLRALNEITESGRIGFGSFVDKTVLPFVNTHPKLRNPCPNKEKECQPPFAFRHVLKL
TNNSNQFQTEVGKQLISGNLDAPEGGLDAMMQVAACPEEIGWRNVTRLLVFATDDGFHFAGDGKLGAIL
T
PNDGRCHLEDNLYKRSNEFDYPSVGLAHKLAENNIQPIFAVTSRMVKTYEKLTEIIPKSAVGELSESS
NVVQLIKNAYNKLSSRVFLDHNALPDTLKVTYDSFCSNGVTHRNQPRGDCDGVQINVPITFQVKVTATEC
IQEQSFVIRALGFTDIVTVQVLPQCECRCRDQSRDRSLCHGKGFLECGICRCDTGYIGKNCECQTQGRSS
QELEGSCRKDNNSIICSGLGDCVCGQCLCHTSDVPGKLIYGQYCECDTINCERYNGQVCGGPGRGLCFCG
KCRCHPGFEGSACQCERTTEGCLNPRRVECSGRGRRCNCVCECHSGYQLPLCQECPCSPCGKYISCAE
CLKFEKGPFGKNCSAACPGLQLSNNPVKGRTCKERDSEGCWVAYTLEQQDGM DRYLIYVDESRECVAGP
N
IAAIVGGTVAGIVLIGILLVWKAHLHLSDLREYRRFEKEKLSQWNNNDNPLFKSATTVMNPKFAES

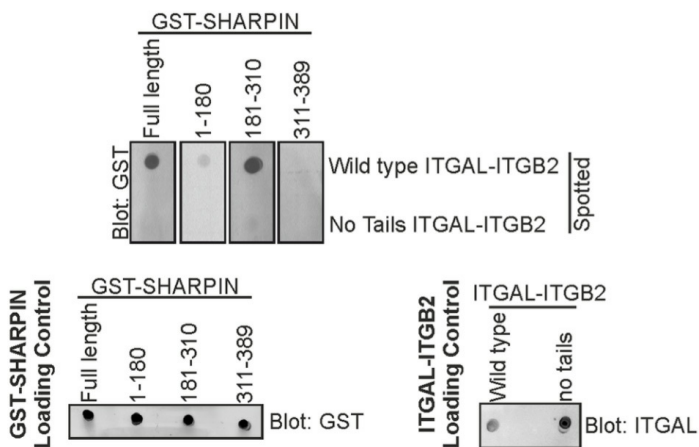
TRTRPLEQKLISEEDLAANDILDYKDDDDKV

Tag:	C-Myc/DDK
Predicted MW:	82.5 kDa
Concentration:	>0.05 µg/µL as determined by microplate BCA method
Purity:	> 80% as determined by SDS-PAGE and Coomassie blue staining
Buffer:	25 mM Tris-HCl, 100 mM glycine, pH 7.3, 10% glycerol
Bioactivity:	Far-Western blot (PMID: 26600301) ELISA binding assay (PMID: 29125705)

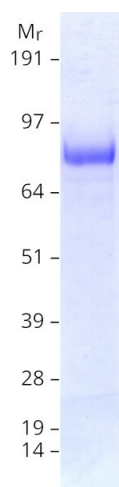


[View online »](#)

Preparation:	Recombinant protein was captured through anti-DDK affinity column followed by conventional chromatography steps.
Note:	For testing in cell culture applications, please filter before use. Note that you may experience some loss of protein during the filtration process.
Storage:	Store at -80°C.
Stability:	Stable for 12 months from the date of receipt of the product under proper storage and handling conditions. Avoid repeated freeze-thaw cycles.
RefSeq:	<u>NP_001120963</u>
Locus ID:	3689
UniProt ID:	<u>P05107</u>
Cytogenetics:	21q22.3
RefSeq ORF:	2307
Synonyms:	CD18; LAD; LCAMB; LFA-1; MAC-1; MF17; MFI7
Summary:	This gene encodes an integrin beta chain, which combines with multiple different alpha chains to form different integrin heterodimers. Integrins are integral cell-surface proteins that participate in cell adhesion as well as cell-surface mediated signalling. The encoded protein plays an important role in immune response and defects in this gene cause leukocyte adhesion deficiency. Alternative splicing results in multiple transcript variants. [provided by RefSeq, Dec 2014]
Protein Families:	Druggable Genome, Transmembrane
Protein Pathways:	Cell adhesion molecules (CAMs), Leukocyte transendothelial migration, Natural killer cell mediated cytotoxicity, Regulation of actin cytoskeleton, Viral myocarditis

Product images:


The UBL domain (181-310) of SHARPIN mediates binding to cytoplasmic tails of integrin, as analyzed by Far-Western of GST-SHARPIN (full-length or fragments) binding to full-length ITGAL-ITGB2 (OriGene [TP321297] and TP326157) or ITGAL-ITGB2 lacking both cytoplasmic tails. Loading controls for GST-SHARPIN (full-length or fragments) and both ITGAL-ITGB2s are shown. Figure cited from PLoS ONE, PMID: 26600301



Coomassie blue staining of purified ITGB2 protein (Cat# TP326157). The protein was produced from HEK293T cells transfected with ITGB2 cDNA clone (Cat# [RC226157]) using MegaTran 2.0 (Cat# [TT210002]).