

## Product datasheet for **TP326153M**

### **ECE1 (NM\_001113349) Human Recombinant Protein**

#### Product data:

Product Type:	Recombinant Proteins
Description:	Recombinant protein of human endothelin converting enzyme 1 (ECE1), transcript variant 2, 100 µg
Species:	Human
Expression Host:	HEK293T
Expression cDNA Clone or AA Sequence:	>RC226153 representing NM_001113349 <b>Red</b> =Cloning site <b>Green</b> =Tags(s)

MEALRESVLHLALQMSTYKRATLDEEDLVDSLSEGDAYPNGLQVNFHSPRSGQRCWAARTQVEKRLWLV  
VLLAAGLVACLAALGIYQTRSPSVCLSEACVSVTSSILSSMDPTVDPCHDFFSYACGGWIKANPVPDGH  
SRWGTFSNLWEHNQAIKHLLNSTASVSEAERKAQVYRACMNETRIEELRAKPLMELIERLGGWNITG  
PWAKDNFQDTLQVVTAHYRTSPFFSVYVSADSKNSNSNVIQVDQSGGLPSRDYYLNKTENEKVLGTGLN  
YMQVLGKLLGGGDEEAIQPMQILDFETALANITIPQEKRRDEELIYHKVTAELQTLAPAINWLPFLN  
TIFYPVEINESEPIVWYDKEYLEQISTLINTTDRCLLNNYMIWNLVLRKTSFFLDQRFQDADEKFMVEMYG  
TKKTCLPRWKFVSDTENNLGFALGPMFVKATFAEDSKSIATEIILEIKKAFFESLSTLKWMDDETRKSA  
KEKADAIYNMIGYPNFIMDPKELDKVFNDYTAVPDLYFENAMRFFNFSWRVTADQLRKAPNRDQWSMTPP  
MVNAYYSPTKNEIVPAGILQAPFYTRSSPKALNFGGIGVVVGHETHAFDDQGREYDKDGNLRPWWKNS  
SVEAFKRQTECMVEQYSNYSVNGEPVNGRHTLGENIADNGGLKAAAYRAYQNWVKKNGAEHSLPTLGLTNN  
QLFFLGFQVWCSVRTPESSHEGLITDPHSPSRFRVIGLSLSNSKEFSEHFRCPPGSPMNPCHKCEVW

**TRTRPLEQKLISEEDLAANDILDYKDDDDKV**

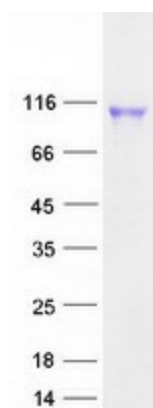
Tag:	C-Myc/DDK
Predicted MW:	86.8 kDa
Concentration:	>0.05 µg/µL as determined by microplate BCA method
Purity:	> 80% as determined by SDS-PAGE and Coomassie blue staining
Buffer:	25 mM Tris-HCl, 100 mM glycine, pH 7.3, 10% glycerol
Preparation:	Recombinant protein was captured through anti-DDK affinity column followed by conventional chromatography steps.
Note:	For testing in cell culture applications, please filter before use. Note that you may experience some loss of protein during the filtration process.



[View online »](#)

Storage:	Store at -80°C.
Stability:	Stable for 12 months from the date of receipt of the product under proper storage and handling conditions. Avoid repeated freeze-thaw cycles.
RefSeq:	<a href="#">NP_001106820</a>
Locus ID:	1889
UniProt ID:	<a href="#">P42892</a> , <a href="#">A0A024RAB2</a>
Cytogenetics:	1p36.12
RefSeq ORF:	2301
Synonyms:	ECE
Summary:	The protein encoded by this gene is involved in proteolytic processing of endothelin precursors to biologically active peptides. Mutations in this gene are associated with Hirschsprung disease, cardiac defects and autonomic dysfunction. Alternatively spliced transcript variants encoding different isoforms have been noted for this gene.[provided by RefSeq, Sep 2009]
Protein Families:	Druggable Genome, Protease, Transmembrane

### Product images:



Coomassie blue staining of purified ECE1 protein (Cat# [TP326153]). The protein was produced from HEK293T cells transfected with ECE1 cDNA clone (Cat# [RC226153]) using MegaTran 2.0 (Cat# [TT210002]).