

Product datasheet for TP326152M

SATB1 (NM_001131010) Human Recombinant Protein

Product data:

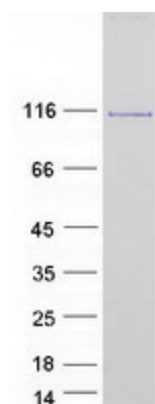
Product Type:	Recombinant Proteins
Description:	Recombinant protein of human SATB homeobox 1 (SATB1), transcript variant 2, 100 µg
Species:	Human
Expression Host:	HEK293T
Expression cDNA Clone or AA Sequence:	>RC226152 protein sequence Red =Cloning site Green =Tags(s)
	<p>MDHLNEATQGKEHSEMSNNVSDPKGPPAKIARLEQNGSPLGRGRLGSTGAKMQGVPLKHSGLMKTNLRK GTMLPVFCVVEHYENAIEYDCKEEHAFLVLRKDMLFNQLIEMALLSLGYSHSSAAQAKGLIQVGKWNPV PLSYVTDAPDATVADMLQDVYHVVTLKIQLHSCPKLEDLPPEQWSHTTVRNALKDLLKDMNQSSLAKECP LSQSMISSIVNSTYYANVSAKQCQEFGRWYKHFKTKDMMVEMDLSSELSQQGANHVNFGQQPVPNGTAE QPPSPAQLSHGSQPSVRTPLPNLHPGLVSTPISPQLVNQQQLVMAQLLNQQYAVNRLLAQQLSLNQQYLNHP PPVSRSMNKPLEQQVSTNTEVSSEIYQWVRDELKCRAGISQAVFARVAFNRQTGLLSEILRKEEDPKTASQ SLLVNLRAMQNFLQLPEAERDRIYQDERERSLNAASAMGPAPLISTPPSRPPQVKTATIATERNKGPENN TMNINASIYDEIQQEMKRAKVSQALFAKVAATKSQGWLCCELLRWKEDPSPENRTLWENLSMIRRFSLPQ PERDAIYEQESNAVHHHGDRPPHIIHVPAEQIQQQQQQQQQQQQQQQQAPPPPQPQQQPQTGPRLPQRPT VASPAESDEENRQKTRPRTKISVEALGILQSFQDVGLYPDEEAIQTLAQLDLPKYTIKFFQNQRYYL KHHGKLDNSGLEVDVAEYKEEELLKDLEESVQDKNTNTLFSVKLEEELSVEGNTDINTDLKD</p> <p>TRTRPLEQKLISEEDLAANDILDYKDDDDKV</p>
Tag:	C-Myc/DDK
Predicted MW:	85.8 kDa
Concentration:	>0.05 µg/µL as determined by microplate BCA method
Purity:	> 80% as determined by SDS-PAGE and Coomassie blue staining
Buffer:	25 mM Tris-HCl, 100 mM glycine, pH 7.3, 10% glycerol
Preparation:	Recombinant protein was captured through anti-DDK affinity column followed by conventional chromatography steps.
Note:	For testing in cell culture applications, please filter before use. Note that you may experience some loss of protein during the filtration process.
Storage:	Store at -80°C.



[View online »](#)

Stability:	Stable for 12 months from the date of receipt of the product under proper storage and handling conditions. Avoid repeated freeze-thaw cycles.
RefSeq:	NP_001124482
Locus ID:	6304
UniProt ID:	Q01826 , A0A024R2H1
RefSeq Size:	4054
Cytogenetics:	3p24.3
RefSeq ORF:	2289
Synonyms:	DEFDA; KTZSL
Summary:	This gene encodes a matrix protein which binds nuclear matrix and scaffold-associating DNAs through a unique nuclear architecture. The protein recruits chromatin-remodeling factors in order to regulate chromatin structure and gene expression. [provided by RefSeq, Apr 2016]
Protein Families:	Druggable Genome, Transcription Factors

Product images:



Coomassie blue staining of purified SATB1 protein (Cat# [TP326152]). The protein was produced from HEK293T cells transfected with SATB1 cDNA clone (Cat# [RC226152]) using MegaTran 2.0 (Cat# [TT210002]).