

## Product datasheet for TP326152L

### SATB1 (NM\_001131010) Human Recombinant Protein

#### Product data:

**Product Type:** Recombinant Proteins  
**Description:** Recombinant protein of human SATB homeobox 1 (SATB1), transcript variant 2, 1 mg  
**Species:** Human  
**Expression Host:** HEK293T  
**Expression cDNA Clone or AA Sequence:** >RC226152 protein sequence  
**Red**=Cloning site **Green**=Tags(s)

MDHLNEATQGKEHSEMSNNVSDPKGPPAKIARLEQNGSPLGRGRLGSTGAKMQGVPLKHSGLMKTNLRK  
GTMLPVFCVVEHYENAIEYDCKEEHAFLVLRKDMLFNQLIEMALLSLGYSHSSAAQAKGLIQVGKWNPV  
PLSYVTDAPDATVADMLQDVYHVVTLKIQLHSCPKLEDLPPEQWSHTTVRNALKDLLKDMNQSSLAKECP  
LSQSMISSIVNSTYYANVSAKQCQEFGRWYKHFKTKDMMVEMDLSSELSQQGANHVNFGQQPVPGNAT  
QPPSPAQLSHGSQPSVRTPLPNLHPGLVSTPISPQLVNQQLVMAQLLNQQYAVNRLLAQQLSLNQQYLNHP  
PPVSRSMNKPLEQQVSTNTEVSSEIYQWVRDELKRAQISQAVFARVAFNRQTGLLSEILRKEEDPKTASQ  
SLLVNLRAMQNFLQLPEAERDRIYQDERERSLNAASAMGPAPLISTPPSRPPQVKATATERNKGPENN  
TMNINASIYDEIQQEMKRAKVSQALFAKVAATKSQGWLCCELLRWKEDPSPENRTLWENLSMIRRFSLPQ  
PERDAIYEQESNAVHHHGDRPPHIIHVPAEQIQQQQQQQQQQQQQQQQAPPPPQPQQQPQTGPRLP  
PPRQPTVASPAESDEENRQKTRPRTKISVEALGILQSFQDVGILYPDEEAIQTLAQLDLPKYTIKFFQNQRYL  
KHHGKLDNSGLEVDVAEYKEEELLKDLEESVQDKNTNTLFSVKLEEELSVEGNTDINTDLKD

**TRTRPLEQKLISEEDLAANDILDYKDDDDKV**

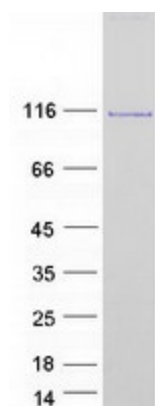
**Tag:** C-Myc/DDK  
**Predicted MW:** 85.8 kDa  
**Concentration:** >0.05 µg/µL as determined by microplate BCA method  
**Purity:** > 80% as determined by SDS-PAGE and Coomassie blue staining  
**Buffer:** 25 mM Tris-HCl, 100 mM glycine, pH 7.3, 10% glycerol  
**Preparation:** Recombinant protein was captured through anti-DDK affinity column followed by conventional chromatography steps.  
**Note:** For testing in cell culture applications, please filter before use. Note that you may experience some loss of protein during the filtration process.  
**Storage:** Store at -80°C.



[View online »](#)

<b>Stability:</b>	Stable for 12 months from the date of receipt of the product under proper storage and handling conditions. Avoid repeated freeze-thaw cycles.
<b>RefSeq:</b>	<a href="#">NP_001124482</a>
<b>Locus ID:</b>	6304
<b>UniProt ID:</b>	<a href="#">Q01826</a> , <a href="#">A0A024R2H1</a>
<b>RefSeq Size:</b>	4054
<b>Cytogenetics:</b>	3p24.3
<b>RefSeq ORF:</b>	2289
<b>Synonyms:</b>	DEFDA; KTZSL
<b>Summary:</b>	This gene encodes a matrix protein which binds nuclear matrix and scaffold-associated DNAs through a unique nuclear architecture. The protein recruits chromatin-remodeling factors in order to regulate chromatin structure and gene expression. [provided by RefSeq, Apr 2016]
<b>Protein Families:</b>	Druggable Genome, Transcription Factors

### Product images:



Coomassie blue staining of purified SATB1 protein (Cat# [TP326152]). The protein was produced from HEK293T cells transfected with SATB1 cDNA clone (Cat# [RC226152]) using MegaTran 2.0 (Cat# [TT210002]).