

Product datasheet for **TP326057M**

ARHGEF7 (NM_001113513) Human Recombinant Protein

Product data:

Product Type:	Recombinant Proteins
Description:	Recombinant protein of human Rho guanine nucleotide exchange factor (GEF) 7 (ARHGEF7), transcript variant 5, 100 µg
Species:	Human
Expression Host:	HEK293T
Expression cDNA Clone or AA Sequence:	>RC226057 representing NM_001113513 Red=Cloning site Green=Tags(s)

MTDNSNNQLVWRAKFNFQQTNEDELSFSKGDVIHVTRVEEGGWEGTLNGRTGWFPSNYVREVKASEKPV
SPKSGTLKSPPKGFDTTAINKSYNNVVLQNILETENEYSKELQTVLSTYLRLPLQTSEKLSSANISYLMGN
LEEICSFQQLVQSLEECTKLPEAQQRVGGCFLNLMQPMLTYLYCANHPSAVNVLTEHSEELGEFMET
KGASSPGILVLTGLSKPFMRDKYPTLLKELERHMEDYHTDRQDIQKSMAAFKNLSAQCCQEVRRKKELE
LQILTEAIRNWEGDDIKTLGNVTYMSQVLIQCAGSEEKNERYLLLFPNVLLMLSASPRMSGFIYQGKLP
TGMTITKLESENHRNAFEISGSMIERILVSCNNQQDLQEWVEHLQKQTKVTSVGNPTIKPHSVPSHTLP
SHPVTPSSKHADSKPAPLTPAYHTLPHPSHHGTPHTTINWGPLEPPKTPKPSLSCLRPAAPLRPSAALC
YKEDLSKSPKTMKKLLPKRKPERKPSDEEFASRKSTAAL EEDAQILKVEAYCTSAKTRQTLNSSSRKES
APQVLLPEEEKIIVEETKSNQTVIEEKSLVDTVYALKDEVQELRQDNKKMKKSLEEEQRARKDLEKLVR
KVLKNMNDPAWDETNL

TRTRPLEQKLISEEDLAANDILDYKDDDDKV

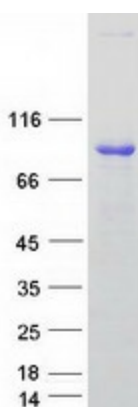
Tag:	C-Myc/DDK
Predicted MW:	73 kDa
Concentration:	>0.05 µg/µL as determined by microplate BCA method
Purity:	> 80% as determined by SDS-PAGE and Coomassie blue staining
Buffer:	25 mM Tris-HCl, 100 mM glycine, pH 7.3, 10% glycerol
Preparation:	Recombinant protein was captured through anti-DDK affinity column followed by conventional chromatography steps.
Note:	For testing in cell culture applications, please filter before use. Note that you may experience some loss of protein during the filtration process.
Storage:	Store at -80°C.



[View online »](#)

Stability:	Stable for 12 months from the date of receipt of the product under proper storage and handling conditions. Avoid repeated freeze-thaw cycles.
RefSeq:	NP_001106985
Locus ID:	8874
UniProt ID:	Q14155 , A0A024RDY9
Cytogenetics:	13q34
RefSeq ORF:	1938
Synonyms:	BETA-PIX; COOL-1; COOL1; Nbla10314; P50; P50BP; P85; P85COOL1; P85SPR; PAK3; PIXB
Summary:	This gene encodes a protein that belongs to a family of cytoplasmic proteins that activate the Ras-like family of Rho proteins by exchanging bound GDP for GTP. It forms a complex with the small GTP binding protein Rac1 and recruits Rac1 to membrane ruffles and to focal adhesions. Multiple alternatively spliced transcript variants encoding different isoforms have been observed for this gene. [provided by RefSeq, Mar 2016]
Protein Pathways:	Regulation of actin cytoskeleton

Product images:



Coomassie blue staining of purified ARHGEF7 protein (Cat# [TP326057]). The protein was produced from HEK293T cells transfected with ARHGEF7 cDNA clone (Cat# [RC226057]) using MegaTran 2.0 (Cat# [TT210002]).