

Product datasheet for **TP326034L**

KLC2 (NM_001134775) Human Recombinant Protein

Product data:

Product Type: Recombinant Proteins

Description: Recombinant protein of human kinesin light chain 2 (KLC2), transcript variant 3, 1 mg

Species: Human

Expression Host: HEK293T

Expression cDNA Clone or AA Sequence: >RC226034 protein sequence
Red=Cloning site Green=Tags(s)

MAMMVFPREEKLSQDEIVLGTKAVIQGLETLRGEHRALLAPLVAPEAGEAEPGSQERCILLRRSLEAIEL
GLGEAQVILALSSHLGAVESEKQKLRAQVRRLLVQENQWLREELAGTQQKLRSEQAVAQLEEEKQHLLFM
SQIRKLDEASPNEEKGDVDPKDTLDDLFPNEDEQSPAPSPGGGDVSGQHGGYEIPARLRTLHNLVIQYAS
QGRYEAVPLCKQALEDLEKTSGHDHPDVATMLNILALVYRDQNKYEAAHLLNDALAIREKTLGKDHPA
VAATLNNLAVLYGKRKYKEAEPLCKRALEIREKVLGKFHPDVAKQLSNLALLCQNQGKAEVEYYRRA
LEIYATRLGPDDPNVAKTKNNLASCYLKQGYQDAETLYKEILTRAHEKEFGSVNGDNKPIWMHAEEREE
SKDKRRDSAPYGEYGSWYKACKVDSPTVNTTLRSLGALYRRQGKLEAAHTLEDCASRNKQGLDPASQTK
VVLLKDGSGRRGDRSSRD MAGGAGPRSESDLEDVGPTEAWNGDGSGLRRSGSFGKLRDALRRSSEML
VKKLQGGTPEPPNPRMKRASSLNFLNKSVEEPTQPGGTGLSDSRTLSSSSMDLSRRSSLVG

TRTRPLEQKLISEEDLAANDILDYKDDDDKV

Tag: C-Myc/DDK

Predicted MW: 68.8 kDa

Concentration: >0.05 µg/µL as determined by microplate BCA method

Purity: > 80% as determined by SDS-PAGE and Coomassie blue staining

Buffer: 25 mM Tris-HCl, 100 mM glycine, pH 7.3, 10% glycerol

Preparation: Recombinant protein was captured through anti-DDK affinity column followed by conventional chromatography steps.

Note: For testing in cell culture applications, please filter before use. Note that you may experience some loss of protein during the filtration process.

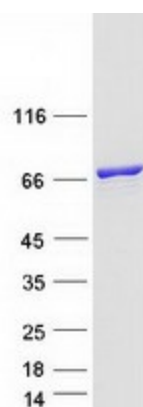
Storage: Store at -80°C.



[View online »](#)

Stability:	Stable for 12 months from the date of receipt of the product under proper storage and handling conditions. Avoid repeated freeze-thaw cycles.
RefSeq:	NP_001128247
Locus ID:	64837
UniProt ID:	Q9H0B6
RefSeq Size:	3093
Cytogenetics:	11q13.2
RefSeq ORF:	1866
Summary:	The protein encoded by this gene is a light chain of kinesin, a molecular motor responsible for moving vesicles and organelles along microtubules. Defects in this gene are a cause of spastic paraplegia, optic atrophy, and neuropathy (SPOAN) syndrome. [provided by RefSeq, Mar 2016]
Protein Families:	Druggable Genome

Product images:



Coomassie blue staining of purified KLC2 protein (Cat# [TP326034]). The protein was produced from HEK293T cells transfected with KLC2 cDNA clone (Cat# [RC226034]) using MegaTran 2.0 (Cat# [TT210002]).