

Product datasheet for TP325882

SMTNL1 (NM_001105565) Human Recombinant Protein

Product data:

Product Type:	Recombinant Proteins
Description:	Purified recombinant protein of Homo sapiens smoothelin-like 1 (SMTNL1), 20 µg
Species:	Human
Expression Host:	HEK293T
Expression cDNA Clone or AA Sequence:	>RC225882 representing NM_001105565 Red=Cloning site Green=Tags(s)

MEQKEGKLSGDGTTVSPAADNPMSGGGAPAEETKGTAGKAINEGPPTESGKQEKAPAEDGMSAELQGEA
NGLDEVKVESQREAGGKEDAEAEELKKEDGEKEETTGVSGQEMTGRKEETKSEPKAEKEESTLASEKQKAE
EKEAKPESGQKADANDRDKPEPKATVEEEDAKTASQEETGQRKECSTEPKEKATDEEAKAESQKAVVEDE
AKAEPKPDGKKEAKHGAKEEADAKEEAEDAEAEAPGSPSEEQEQDVEKEPEGGAGVIPSSPEEWPEPST
GEGHNLSTDGLGPDCVASGQTSPSASESSPSDVPQSPPESSGKKEKAPERRVSAPARPRGPRAQNRK
AIVDKFGGAASGPTALFRNTKAAGAAIGGVKNMLLEWCRAMTKKYEHVDIQNFSSSWSSGMAFCALIHKF
FPDAFDYAELDPAKRRHNFTLAFSTAEKLDCAQLLDVDDMVRVLAVPDSKCVYTYIQELYSRLVQKGLVK
TKKK

TRTRPLEQKLISEEDLAANDILDYKDDDDKV

Tag:	C-Myc/DDK
Predicted MW:	54.6 kDa
Concentration:	>0.05 µg/µL as determined by microplate BCA method
Purity:	> 80% as determined by SDS-PAGE and Coomassie blue staining
Buffer:	25 mM Tris-HCl, 100 mM glycine, pH 7.3, 10% glycerol
Preparation:	Recombinant protein was captured through anti-DDK affinity column followed by conventional chromatography steps.
Note:	For testing in cell culture applications, please filter before use. Note that you may experience some loss of protein during the filtration process.
Storage:	Store at -80°C.
Stability:	Stable for 12 months from the date of receipt of the product under proper storage and handling conditions. Avoid repeated freeze-thaw cycles.



[View online »](#)

RefSeq: [NP_001099035](#)

Locus ID: 219537

UniProt ID: [A8MU46](#)

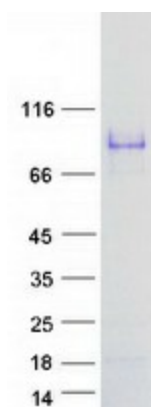
Cytogenetics: 11q12.1

RefSeq ORF: 1482

Synonyms: CHASM

Summary: The protein encoded by this gene is involved in the contraction of both striated and smooth muscle. During pregnancy, the encoded protein interacts with progesterone receptor to attenuate the expression of contractile and metabolic proteins. [provided by RefSeq, Jul 2016]

Product images:



Coomassie blue staining of purified SMTNL1 protein (Cat# TP325882). The protein was produced from HEK293T cells transfected with SMTNL1 cDNA clone (Cat# [RC225882]) using MegaTran 2.0 (Cat# [TT210002]).