

Product datasheet for **TP325870L**

RIPX (RUFY3) (NM_001130709) Human Recombinant Protein

Product data:

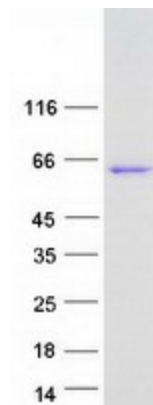
Product Type:	Recombinant Proteins
Description:	Recombinant protein of human RUN and FYVE domain containing 3 (RUFY3), transcript variant 3, 1 mg
Species:	Human
Expression Host:	HEK293T
Expression cDNA Clone or AA Sequence:	>RC225870 representing NM_001130709 Red =Cloning site Green =Tags(s)
	<p>MAETPPPPTAGAESCEEPARGGEWRPEEPRRAPAGGTDREGEAGPPPASPAGQSEPDPVAAPFFLLYP GDGGAGFGVRPPPQQRSWRTPPSPGSPLPFLLLSYPSGGGGSSGSGKHHPNYLMANERMNLMNMAKLSI KGLIESALNLGRTLDSYAPLQQFFVMEHCLKHGLKAKKTFLGQNKSFWGPLELVEKLVPEAAEITASV KDLPLGLKTPVGRGRAWLRLALMQLKSEYMKALINKKELLSEFYEPNALMMEEEGAIAGLLVGLNVIDA NFCMKGEDLDSQVGVDFSMYKLDGNSSKGTEDGQITAILDQKNYVEELNRHLNATVNNLQAKVDALEK SNTKLTTELAVANNRIITLQEEMERVKEESSYILESNRKGPQDRTAEGQALSEARKHLKEETQLRLDVE KELEMQISMQRQEMELAMKMLEKDVCQDALVSLRQQLDDLRLALKHELAFKLQSSDLGVKQKSELNSRLE EKTNQMAATIKQLEQR</p> <p>TRTRPLEQKLISEEDLAANDILDYKDDDDKV</p>
Tag:	C-Myc/DDK
Predicted MW:	55.7 kDa
Concentration:	>0.05 µg/µL as determined by microplate BCA method
Purity:	> 80% as determined by SDS-PAGE and Coomassie blue staining
Buffer:	25 mM Tris-HCl, 100 mM glycine, pH 7.3, 10% glycerol
Preparation:	Recombinant protein was captured through anti-DDK affinity column followed by conventional chromatography steps.
Note:	For testing in cell culture applications, please filter before use. Note that you may experience some loss of protein during the filtration process.
Storage:	Store at -80°C.



[View online »](#)

Stability:	Stable for 12 months from the date of receipt of the product under proper storage and handling conditions. Avoid repeated freeze-thaw cycles.
RefSeq:	NP_001124181
Locus ID:	22902
UniProt ID:	Q7L099
Cytogenetics:	4q13.3
RefSeq ORF:	1518
Synonyms:	RIPX; SINGAR1; ZFYVE30
Summary:	This gene encodes a RPIP8, UNC-14, and NESCA domain-containing protein that is required for maintenance of neuronal polarity. In addition, it has been implicated in mediation of gastric cancer cell migration and invasion via interaction with P21-activated kinase-1, which promotes its expression. The encoded protein localizes to F-actin-enriched invadopodia to induce formation of protrusions, thereby facilitating cell migration. Alternative splicing results in multiple transcript variants. [provided by RefSeq, Sep 2016]

Product images:



Coomassie blue staining of purified RUFY3 protein (Cat# [TP325870]). The protein was produced from HEK293T cells transfected with RUFY3 cDNA clone (Cat# [RC225870]) using MegaTran 2.0 (Cat# [TT210002]).