

## Product datasheet for TP325856L

### WDR26 (NM\_001115113) Human Recombinant Protein

#### Product data:

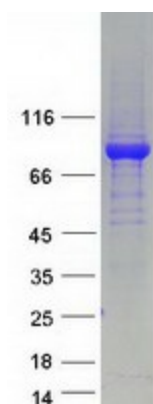
Product Type:	Recombinant Proteins
Description:	Purified recombinant protein of Homo sapiens WD repeat domain 26 (WDR26), transcript variant 2, 1 mg
Species:	Human
Expression Host:	HEK293T
Expression cDNA Clone or AA Sequence:	>RC225856 representing NM_001115113 Red=Cloning site Green=Tags(s)
	<p>MQESGCRLEHPSATKFRNHVMEGDWDKAENDLNELKPLVHSPHAIVRMKFULLLQQKYLEYLEDGKVLEAL QVLRCELTPKYNTERIHVLSGYLMCSHAEDLRAKAEWEGKGTASRSKLLDKLQTYLPPSVMLPPRRLQT LLRQAVELQRDRCLYHNTKLDNNLDSVSLLDHVCSSRRQFPCYTQQILTEHCNEVWFCKFSNDGTKLATG SKDTTVVIWQVDPDTHLLKLLKTLEGHAYGVSYIAWSPDDNYLVACGPDDCSELWLWNVQTGELRTKMSQ SHEDSLTSVAWNPDGKRFVTGGQRGQFYQCDLDGNLLDSWEGVVRVQCLWCLSDGKTVLASDTHQRIRGYN FEDLTDNRIVQEDHPIMSFTISKNGRLALLNVATQGVHLWDLQDRVLVRKYQGVTVQGFYTIHSCFGGHNE DFIASGSEDHKVYIWHKRSELPIAELTGHRTRVNCVSWNPQIPSMASASDDGTVRIWGPAPFIDHQNIE EECSSMDS</p> <p>TRTRPLEQKLISEEDLAANDILDYKDDDDKV</p>
Tag:	C-Myc/DDK
Predicted MW:	70.3 kDa
Concentration:	>0.05 µg/µL as determined by microplate BCA method
Purity:	> 80% as determined by SDS-PAGE and Coomassie blue staining
Buffer:	25 mM Tris-HCl, 100 mM glycine, pH 7.3, 10% glycerol
Preparation:	Recombinant protein was captured through anti-DDK affinity column followed by conventional chromatography steps.
Note:	For testing in cell culture applications, please filter before use. Note that you may experience some loss of protein during the filtration process.
Storage:	Store at -80°C.



[View online »](#)

<b>Stability:</b>	Stable for 12 months from the date of receipt of the product under proper storage and handling conditions. Avoid repeated freeze-thaw cycles.
<b>RefSeq:</b>	<a href="#">NP_001108585</a>
<b>Locus ID:</b>	80232
<b>UniProt ID:</b>	<a href="#">Q9H7D7</a>
<b>Cytogenetics:</b>	1q42.11-q42.12
<b>RefSeq ORF:</b>	1494
<b>Synonyms:</b>	CDW2; GID7; MIP2; SKDEAS
<b>Summary:</b>	This gene encodes a member of the WD repeat protein family. WD repeats are minimally conserved regions of approximately 40 amino acids typically bracketed by gly-his and trp-asp (GH-WD), which may facilitate formation of heterotrimeric or multiprotein complexes. Members of this family are involved in a variety of cellular processes, including cell cycle progression, signal transduction, apoptosis, and gene regulation. Two transcript variants encoding two different isoforms have been found for this gene. [provided by RefSeq, Jul 2008]

### Product images:



Coomassie blue staining of purified WDR26 protein (Cat# [TP325856]). The protein was produced from HEK293T cells transfected with WDR26 cDNA clone (Cat# [RC225856]) using MegaTran 2.0 (Cat# [TT210002]).