

Product datasheet for **TP325842L**

LYN (NM_001111097) Human Recombinant Protein

Product data:

Product Type: Recombinant Proteins

Description: Purified recombinant protein of Homo sapiens v-yes-1 Yamaguchi sarcoma viral related oncogene homolog (LYN), transcript variant 2, 1 mg

Species: Human

Expression Host: HEK293T

Expression cDNA Clone or AA Sequence: >RC225842 representing NM_001111097
Red=Cloning site **Green**=Tags(s)

MGCIKSKGKDSLSDDGVDLKTQVPESQLLPGQRFQTKDPEEQGDIVVALYPYDGIHPDDL SFKKGEKMK
VLEEHGEWWKAKSLLTKKEGFIPSNYVAKLNTLETEEWWFFKDITRKDAERQLLAPGNSAGAF LI RESETL
KGSFSLSVRDFDPVHGDVIKHYKIRSLDNGGYISPRITFPCISDMIKHYQKQADGLCRRLEKACISPKP
QKPWDKDAWEIPRESIKLVKRLGAGQFGEVWMGYNNSTKVAVKTLKPGTMSVQAFLEEANLMKTLQHDK
LVRLYAVVTREEPIYIITEYMAKGSLLDFLKSDEGGKVLLPKLIDFSAQIAEGMAYIERKNYIHRDLRAA
NVLVSESLMCKIADFGLARVIEDNEYTAREGAKFPIKWTAPEAINFGCFTIKSDVWSFGILLYEIVTYGK
IPYPGRTNADVMTALSQGYRMPRVENCPEDELYDIMKMCWKEKAEERPTFDYLQSVLDDFFYTATEGQYQQQ
P

TRTRPLEQKLISEEDLAANDILDYKDDDDKV

Tag: C-Myc/DDK

Predicted MW: 55.9 kDa

Concentration: >0.05 µg/µL as determined by microplate BCA method

Purity: > 80% as determined by SDS-PAGE and Coomassie blue staining

Buffer: 25 mM Tris-HCl, 100 mM glycine, pH 7.3, 10% glycerol

Preparation: Recombinant protein was captured through anti-DDK affinity column followed by conventional chromatography steps.

Note: For testing in cell culture applications, please filter before use. Note that you may experience some loss of protein during the filtration process.

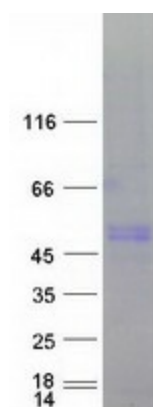
Storage: Store at -80°C.



[View online »](#)

Stability:	Stable for 12 months from the date of receipt of the product under proper storage and handling conditions. Avoid repeated freeze-thaw cycles.
RefSeq:	NP_001104567
Locus ID:	4067
UniProt ID:	P07948 , Q6NUK7 , P07948-2
Cytogenetics:	8q12.1
RefSeq ORF:	1473
Synonyms:	JTK8; p53Lyn; p56Lyn
Summary:	This gene encodes a tyrosine protein kinase, which maybe involved in the regulation of mast cell degranulation, and erythroid differentiation. Alternatively spliced transcript variants encoding different isoforms have been found for this gene. [provided by RefSeq, Jul 2011]
Protein Families:	Druggable Genome, Protein Kinase
Protein Pathways:	B cell receptor signaling pathway, Chemokine signaling pathway, Epithelial cell signaling in Helicobacter pylori infection, Fc epsilon RI signaling pathway, Fc gamma R-mediated phagocytosis, Long-term depression

Product images:



Coomassie blue staining of purified LYN protein (Cat# [TP325842]). The protein was produced from HEK293T cells transfected with LYN cDNA clone (Cat# [RC225842]) using MegaTran 2.0 (Cat# [TT210002]).