

Product datasheet for **TP325842**

LYN (NM_001111097) Human Recombinant Protein

Product data:

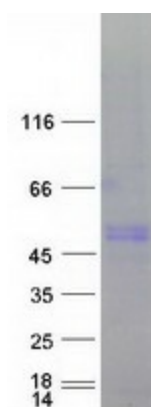
Product Type:	Recombinant Proteins
Description:	Purified recombinant protein of Homo sapiens v-yes-1 Yamaguchi sarcoma viral related oncogene homolog (LYN), transcript variant 2, 20 µg
Species:	Human
Expression Host:	HEK293T
Expression cDNA Clone or AA Sequence:	>RC225842 representing NM_001111097 Red =Cloning site Green =Tags(s)
	<p>MGCIKSKGKDSLSDDGVDLKTQVPESQLLPGQRFQTKDPEEQGDIVVALYPYDGIHPDDL SFKKGEKMK VLEEHGEWWKAKSLLTKEGFI PSNYVAKLNTLETEE WFFKDITRKDAERQL LAPGNSAGAF LI RESETL KGSFSLSVRDFDPVHGDVIKHYKIRSLDNGGYISPRITFPCISDMIKHYQKQADGLCRRLEKACISPKP QKPWDKDAWEIPRESIKLVKRLGAGQFGEVWMGYNNSTKVAVKTLKPGTMSVQAFLEEANLMKTLQHDK LVRLYAVVTREPIYIITEYMAKGSLLDFLKSDEGGKVLLPKLIDFSAQIAEGMAYIERKNYIHRDLRAA NVLVSESLMCKIADFLARVIEDNEYTAREGAKFPIKWTAPEAINFGCFTIKSDVWSFGILLYEIVTYGK IPYPGRTNADVMTALSQGYRMPRVENCPELDYDIMKMCWKEKAEERPTFDYLQSVLDDFFYTATEGQYQQQ P</p> <p>TRTRPLEQKLISEEDLAANDILDYKDDDDKV</p>
Tag:	C-Myc/DDK
Predicted MW:	55.9 kDa
Concentration:	>0.05 µg/µL as determined by microplate BCA method
Purity:	> 80% as determined by SDS-PAGE and Coomassie blue staining
Buffer:	25 mM Tris-HCl, 100 mM glycine, pH 7.3, 10% glycerol
Preparation:	Recombinant protein was captured through anti-DDK affinity column followed by conventional chromatography steps.
Note:	For testing in cell culture applications, please filter before use. Note that you may experience some loss of protein during the filtration process.
Storage:	Store at -80°C.



[View online »](#)

Stability:	Stable for 12 months from the date of receipt of the product under proper storage and handling conditions. Avoid repeated freeze-thaw cycles.
RefSeq:	NP_001104567
Locus ID:	4067
UniProt ID:	P07948 , Q6NUK7 , P07948-2
Cytogenetics:	8q12.1
RefSeq ORF:	1473
Synonyms:	JTK8; p53Lyn; p56Lyn
Summary:	This gene encodes a tyrosine protein kinase, which maybe involved in the regulation of mast cell degranulation, and erythroid differentiation. Alternatively spliced transcript variants encoding different isoforms have been found for this gene. [provided by RefSeq, Jul 2011]
Protein Families:	Druggable Genome, Protein Kinase
Protein Pathways:	B cell receptor signaling pathway, Chemokine signaling pathway, Epithelial cell signaling in Helicobacter pylori infection, Fc epsilon RI signaling pathway, Fc gamma R-mediated phagocytosis, Long-term depression

Product images:



Coomassie blue staining of purified LYN protein (Cat# TP325842). The protein was produced from HEK293T cells transfected with LYN cDNA clone (Cat# [RC225842]) using MegaTran 2.0 (Cat# [TT210002]).