

Product datasheet for **TP325806**

CAP1 (NM_001105530) Human Recombinant Protein

Product data:

Product Type:	Recombinant Proteins
Description:	Purified recombinant protein of Homo sapiens CAP, adenylate cyclase-associated protein 1 (yeast) (CAP1), transcript variant 2, 20 µg
Species:	Human
Expression Host:	HEK293T
Expression cDNA Clone or AA Sequence:	>RC225806 protein sequence Red =Cloning site Green =Tags(s)

MADMQNLVERLERAVGRLEAVSHTSDMHRGYADSPSKAGAAPYVQAFDSLLAGPVAEYLKISKEIGGDVQ
KHAEMVHTGLKLERALLVTASQCQQAENKLSDLLAPISEQIKEVITFREKNRGSKLFNHL SAVSESIQA
LGWVAMAPKPGPYVKEMNDAAMFYTNRVLKEYKDVDKKHVDWVKAYLSIWTELQAYIKEFHHTGLAWSKT
GPVAKELSGLPSPGSAAGSGPPPPPPGPPPPVSTSSGSDESASRSALFAQINQGESITHALKHVSDDMKT
HKNPALKAQSGPVRSGPKPFSAPKPQTSPSPKRATKKEPAVLELEGKKWRVENQENVSNLVIETELKQV
AYIYKCVNTTLQIKGKINSITVDNCKKLGLVFDVVGIVEIINSKDVKVQVMGKVPTISINKTDGCHAYL
SKNSLDCEIVSAKSSEMNVLIPTTEGGDFNEFPVPEQFKTLWNGQKLVTTVTEIAG

TRTRPLEQKLISEEDLAANDILDYKDDDDKV

Tag:	C-Myc/DDK
Predicted MW:	51.5 kDa
Concentration:	>0.05 µg/µL as determined by microplate BCA method
Purity:	> 80% as determined by SDS-PAGE and Coomassie blue staining
Buffer:	25 mM Tris-HCl, 100 mM glycine, pH 7.3, 10% glycerol
Preparation:	Recombinant protein was captured through anti-DDK affinity column followed by conventional chromatography steps.
Note:	For testing in cell culture applications, please filter before use. Note that you may experience some loss of protein during the filtration process.
Storage:	Store at -80°C.
Stability:	Stable for 12 months from the date of receipt of the product under proper storage and handling conditions. Avoid repeated freeze-thaw cycles.



[View online >](#)

RefSeq: [NP_001099000](#)

Locus ID: 10487

UniProt ID: [Q01518](#), [D3DPU2](#)

RefSeq Size: 2780

Cytogenetics: 1p34.2

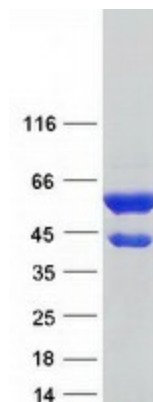
RefSeq ORF: 1425

Synonyms: CAP; CAP1-PEN

Summary: The protein encoded by this gene is related to the *S. cerevisiae* CAP protein, which is involved in the cyclic AMP pathway. The human protein is able to interact with other molecules of the same protein, as well as with CAP2 and actin. Alternatively spliced transcript variants encoding different isoforms have been identified. [provided by RefSeq, Aug 2016]

Protein Families: Druggable Genome

Product images:



Coomassie blue staining of purified CAP1 protein (Cat# TP325806). The protein was produced from HEK293T cells transfected with CAP1 cDNA clone (Cat# [RC225806]) using MegaTran 2.0 (Cat# [TT210002]).