

## Product datasheet for **TP325784**

### LSM14A (NM\_001114093) Human Recombinant Protein

#### Product data:

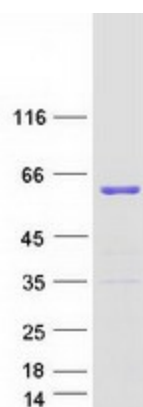
Product Type:	Recombinant Proteins
Description:	Recombinant protein of human LSM14A, SCD6 homolog A ( <i>S. cerevisiae</i> ) (LSM14A), transcript variant 1, 20 µg
Species:	Human
Expression Host:	HEK293T
Expression cDNA Clone or AA Sequence:	>RC225784 protein sequence <b>Red</b> =Cloning site <b>Green</b> =Tags(s)
	<p>MSGGTPYIGSKISLISKAIEIRYEGILYTIDTENSTVALAKVRSFGTEDRPTDRPIPPRDEVFEYIIFRGS DIKDLTVCEPPKPQCSLPQDPAIVQSSLGSSTSSFQSMGSYGPFGRMPTYSQFSPSSLVGGQFGAVGVAG SSLTSFGTETSNSGTLQSSAVGSAFTQDTRSLKTQLSQGRSSPQLDPLRKSPTEQAVQTASAHLPA AVGRRSPVSTRPLPSASQKAGENQEHRRAEVHKVSRPENEQLRNDNKRQVAPGAPSAPRRGRGGHRGG RG RFGIRRDGPMKFEKDFDFESANAQFNKEEIDREFHNKLKLEDKLEKQEKPVNGEDKGDSGVDTONSEG N ADEEDPLGPNCYYDKTKSFFDNISCCDNRRERRPTWAEERRLNAETFGIPLRPNRGRGGYRGRGGLGFRGG RGRGGGRGGTFTAPRGFRGGFRGGRGGRGGREFADFEYRKDNKVAA</p> <p><b>TRTRPLEQKLISEEDLAANDILDYKDDDDKV</b></p>
Tag:	C-Myc/DDK
Predicted MW:	50.3 kDa
Concentration:	>0.05 µg/µL as determined by microplate BCA method
Purity:	> 80% as determined by SDS-PAGE and Coomassie blue staining
Buffer:	25 mM Tris-HCl, 100 mM glycine, pH 7.3, 10% glycerol
Preparation:	Recombinant protein was captured through anti-DDK affinity column followed by conventional chromatography steps.
Note:	For testing in cell culture applications, please filter before use. Note that you may experience some loss of protein during the filtration process.
Storage:	Store at -80°C.



[View online »](#)

<b>Stability:</b>	Stable for 12 months from the date of receipt of the product under proper storage and handling conditions. Avoid repeated freeze-thaw cycles.
<b>RefSeq:</b>	<u>NP_001107565</u>
<b>Locus ID:</b>	26065
<b>UniProt ID:</b>	<u>Q8ND56</u>
<b>RefSeq Size:</b>	3772
<b>Cytogenetics:</b>	19q13.11
<b>RefSeq ORF:</b>	1389
<b>Synonyms:</b>	C19orf13; FAM61A; RAP55; RAP55A
<b>Summary:</b>	Sm-like proteins were identified in a variety of organisms based on sequence homology with the Sm protein family (see SNRPD2; 601061). Sm-like proteins contain the Sm sequence motif, which consists of 2 regions separated by a linker of variable length that folds as a loop. The Sm-like proteins are thought to form a stable heteromer present in tri-snRNP particles, which are important for pre-mRNA splicing.[supplied by OMIM, Mar 2008]

### Product images:



Coomassie blue staining of purified LSM14A protein (Cat# TP325784). The protein was produced from HEK293T cells transfected with LSM14A cDNA clone (Cat# [RC225784]) using MegaTran 2.0 (Cat# [TT210002]).