

Product datasheet for **TP325744L**

CRPPA (NM_001101426) Human Recombinant Protein

Product data:

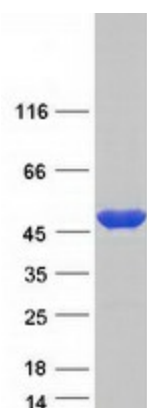
Product Type:	Recombinant Proteins
Description:	Recombinant protein of human notch1-induced protein (LOC729920), transcript variant 1, 1 mg
Species:	Human
Expression Host:	HEK293T
Expression cDNA Clone or AA Sequence:	>RC225744 representing NM_001101426 Red =Cloning site Green =Tags(s)
	<p>MEAGPPGSARPAEPGPCLSGQRGADHTASASLQSVAGTEPGRHPQAVAAVLPAGGCGERMGVPTPKQFCP ILERPLISYTLQALERVWCWIKDIVVAVTGENMEVMKSIIQKYQHKRISLVEAGVTRHRSIFNGLKALAED QINSKLSKPEVVIHDAVRPFVEEGVLLKVVTAAKEHGAAGAIRPLVSTVVSADGCLDYSLERARHRA SEMPQAFDFVIYEAYQQCSYDLEFGTECLQLALKYCCTKAKLVEGSPDLWKVTKRDLYAAESIKER ISQEICVMDTEEDNKHVGHLLLEVLKSELNHVKVTSEALGHAGRHLQIILDQCYNFVCVNVTTSDFQE TQKLLSMLEESSLCILYPVVVSVHFLDFKLVPSPQKMENLMQIREFAKEVKERNILLYGLLISYPQDDQ KLQESLRQGAIISLIKERNNSGLIGQLLIA</p> <p>TRTRPLEQKLISEEDLAANDILDYKDDDDKV</p>
Tag:	C-Myc/DDK
Predicted MW:	49.7 kDa
Concentration:	>0.05 µg/µL as determined by microplate BCA method
Purity:	> 80% as determined by SDS-PAGE and Coomassie blue staining
Buffer:	25 mM Tris-HCl, 100 mM glycine, pH 7.3, 10% glycerol
Preparation:	Recombinant protein was captured through anti-DDK affinity column followed by conventional chromatography steps.
Note:	For testing in cell culture applications, please filter before use. Note that you may experience some loss of protein during the filtration process.
Storage:	Store at -80°C.
Stability:	Stable for 12 months from the date of receipt of the product under proper storage and handling conditions. Avoid repeated freeze-thaw cycles.
RefSeq:	<u>NP_001094896</u>



[View online »](#)

Locus ID:	729920
UniProt ID:	A4D126
Cytogenetics:	7p21.2
RefSeq ORF:	1353
Synonyms:	hISPD; ISPD; LGMDR20; MDDGA7; MDDGC7; Nip
Summary:	This gene encodes a 2-C-methyl-D-erythritol 4-phosphate cytidyltransferase-like protein. Mutations in this gene are the cause of Walker-Warburg syndrome. Alternate splicing results in multiple transcript variants. [provided by RefSeq, May 2012]

Product images:



Coomassie blue staining of purified CRPPA protein (Cat# [TP325744]). The protein was produced from HEK293T cells transfected with CRPPA cDNA clone (Cat# [RC225744]) using MegaTran 2.0 (Cat# [TT210002]).