

## Product datasheet for **TP325691M**

### TBCEL (NM\_001130047) Human Recombinant Protein

#### Product data:

Product Type:	Recombinant Proteins
Description:	Recombinant protein of human tubulin folding cofactor E-like (TBCEL), transcript variant 2, 100 µg
Species:	Human
Expression Host:	HEK293T
Expression cDNA Clone or AA Sequence:	>RC225691 protein sequence <b>Red</b> =Cloning site <b>Green</b> =Tags(s)

MDQPSGRSFMQVLCEKYPENFPYRRGPGMGVHVPATPQGSPMKDRLNLPVSVLVLNSCGITCAGDEKEIA  
AFCAHVSELDLSDNKLEDWHEVSKIVSNVPQLEFLNLSSNPLNLSVLERTCAGSFGVRKLVLNNSKASW  
ETVHMILQELPDLEELFLCLNDYETVSCPSICCHSLKLLHITDNNLQDWTEIRKLGVMFPSLDTLVLANN  
HLNAIEEPDDSLARLFPNLRISLHKSLQSWEDIDKLSFPKLEEVRLGIPLLQPYTTEERRKLVIA  
LPSVSKLNGSVVTDGEREDSERFFIRYYVDVPQEEVPFRYHELITKYGKLEPLAEVDLRPQSSAKVEVHF  
NDQVEEMSIRLDQTVAEKKQLKTLVQLPTSNNMLLYFDHEAPFGPEEMKYSSRALHSFGIRDGDKIYVE  
SKTK

**TRTRPLEQKLISEEDLAANDILDYKDDDDKV**

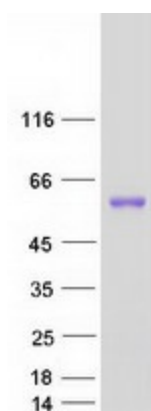
Tag:	C-Myc/DDK
Predicted MW:	48 kDa
Concentration:	>0.05 µg/µL as determined by microplate BCA method
Purity:	> 80% as determined by SDS-PAGE and Coomassie blue staining
Buffer:	25 mM Tris-HCl, 100 mM glycine, pH 7.3, 10% glycerol
Preparation:	Recombinant protein was captured through anti-DDK affinity column followed by conventional chromatography steps.
Note:	For testing in cell culture applications, please filter before use. Note that you may experience some loss of protein during the filtration process.
Storage:	Store at -80°C.
Stability:	Stable for 12 months from the date of receipt of the product under proper storage and handling conditions. Avoid repeated freeze-thaw cycles.



[View online »](#)

RefSeq:	<a href="#">NP_001123519</a>
Locus ID:	219899
UniProt ID:	<a href="#">Q5QI74</a>
RefSeq Size:	3914
Cytogenetics:	11q23.3
RefSeq ORF:	1272
Synonyms:	EI; LRRC35
Summary:	Acts as a regulator of tubulin stability.[UniProtKB/Swiss-Prot Function]
Protein Families:	Druggable Genome

### Product images:



Coomassie blue staining of purified TBCEL protein (Cat# [TP325691]). The protein was produced from HEK293T cells transfected with TBCEL cDNA clone (Cat# [RC225691]) using MegaTran 2.0 (Cat# [TT210002]).