

## Product datasheet for **TP325684L**

### LIPM (NM\_001128215) Human Recombinant Protein

#### Product data:

Product Type:	Recombinant Proteins
Description:	Recombinant protein of human lipase, family member M (LIPM), 1 mg
Species:	Human
Expression Host:	HEK293T
Expression cDNA	>RC225684 representing NM_001128215
Clone or AA Sequence:	Red=Cloning site Green=Tags(s)

MLETLSRQWIVSHRMEMWLLILVAYMFQRNVNSVHMPTKAVDPEAFMNISEIIQHQQGYPCEEYEVATEDG  
YILSVNRIPRGLVQPCKTGSRPVLLQHGLVGGASNWISNLPNNSLGFILADAGFDVWMGNSRGNAWSRK  
HKTLSIDQDEFWAFSYDEMARFDLPVAVINFILQKTGQEKIYYVGYSQGTTMGFIAFSTMPPELAQKIKMYF  
ALAPIATVKHAKSPGTFKLLLPDMMIKGLFGKKEFLYQTRFLRQLVIYLCGQVILDQICSNIMLLGGFN  
TNNMNMMSRASVYAAHTLAGTSVQNILHWSQAVNSGELRAFDWGSSEKTNLEKCNQPTPVRYRVRDMTVPTA  
MWTGGQDWLSNPEDVKMLLSEVTNLIYHKNPEWAHVDFIWGLDAPHRMYNEIIHLMQQEETNLSQGRCE  
AVL

TRTRPLEQKLISEEDLAANDILDYKDDDDKV

Tag:	C-Myc/DDK
Predicted MW:	48.1 kDa
Concentration:	>0.05 µg/µL as determined by microplate BCA method
Purity:	> 80% as determined by SDS-PAGE and Coomassie blue staining
Buffer:	25 mM Tris-HCl, 100 mM glycine, pH 7.3, 10% glycerol
Preparation:	Recombinant protein was captured through anti-DDK affinity column followed by conventional chromatography steps.
Note:	For testing in cell culture applications, please filter before use. Note that you may experience some loss of protein during the filtration process.
Storage:	Store at -80°C.
Stability:	Stable for 12 months from the date of receipt of the product under proper storage and handling conditions. Avoid repeated freeze-thaw cycles.
RefSeq:	<a href="#">NP_001121687</a>



[View online »](#)

Locus ID: 340654

UniProt ID: [Q5VYY2](#)

Cytogenetics: 10q23.31

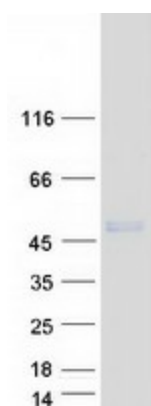
RefSeq ORF: 1269

Synonyms: bA304I5.1; LIPL3

Summary: Plays a highly specific role in the last step of keratinocyte differentiation. May have an essential function in lipid metabolism of the most differentiated epidermal layers.[UniProtKB/Swiss-Prot Function]

Protein Families: Druggable Genome

### Product images:



Coomassie blue staining of purified LIPM protein (Cat# [TP325684]). The protein was produced from HEK293T cells transfected with LIPM cDNA clone (Cat# [RC225684]) using MegaTran 2.0 (Cat# [TT210002]).