

Product datasheet for TP325677

CCBL1 (KYAT1) (NM_001122671) Human Recombinant Protein

Product data:

Product Type:	Recombinant Proteins
Description:	Recombinant protein of human cysteine conjugate-beta lyase, cytoplasmic (CCBL1), transcript variant 2, 20 µg
Species:	Human
Expression Host:	HEK293T
Expression cDNA Clone or AA Sequence:	>RC225677 representing NM_001122671 Red=Cloning site Green=Tags(s)

MAKQLQARRLDGIDYNPWVEFVKLASEHDVNLGQGFPDFPPDFAVEAFQHAVSGDFMLNQYTKTFGYP
PLTKILASFFGELLGQEIDPLRNVLTVGGYGALFTAFQALVDEGDEVIIIPEFFDCYEPMTMMAGGRP
V
FVSLKPGPIQNGELGSSSNWQLDPMELAGKFTSRTKALVNLTPNPLGKVFSSREELELVASLCQQHDVVC
ITDEVYQWMVYDGHQHISIASLPGMWERTLTIGSAGKTFATGWKVGWVLPDGHIMKHLRTVHQNSV
FHC
PTQSQAAVAESFEREQLLFRQPSSYFVQFPQAMQRCRDHMIQSLQSVGLKPIIPQGSYFLITDISDFK
R
K
MPDLPGAVDEPYDRRFVKWMIKNGKLVVAIPVSIFYSVPHQKHFDHYIRFCVFKDEATLQAMDEKLRK
W
K
V
E
L

TRTRPLEQKLISEEDLAANDILDYKDDDDKV

Tag:	C-Myc/DDK
Predicted MW:	47.7 kDa
Concentration:	>0.05 µg/µL as determined by microplate BCA method
Purity:	> 80% as determined by SDS-PAGE and Coomassie blue staining
Buffer:	25 mM Tris-HCl, 100 mM glycine, pH 7.3, 10% glycerol
Preparation:	Recombinant protein was captured through anti-DDK affinity column followed by conventional chromatography steps.
Note:	For testing in cell culture applications, please filter before use. Note that you may experience some loss of protein during the filtration process.
Storage:	Store at -80°C.
Stability:	Stable for 12 months from the date of receipt of the product under proper storage and handling conditions. Avoid repeated freeze-thaw cycles.



[View online »](#)

RefSeq: [NP_001116143](#)

Locus ID: 883

UniProt ID: [Q16773](#), [A8K563](#)

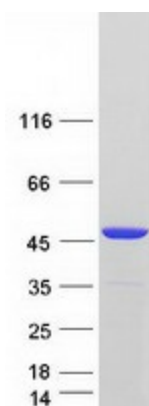
Cytogenetics: 9q34.11

RefSeq ORF: 1266

Synonyms: CCBL1; GTK; KAT1; KATI

Summary: This gene encodes a cytosolic enzyme that is responsible for the metabolism of cysteine conjugates of certain halogenated alkenes and alkanes. This metabolism can form reactive metabolites leading to nephrotoxicity and neurotoxicity. Increased levels of this enzyme have been linked to schizophrenia. Multiple transcript variants that encode different isoforms have been identified for this gene. [provided by RefSeq, Jul 2008]

Product images:



Coomassie blue staining of purified KYAT1 protein (Cat# TP325677). The protein was produced from HEK293T cells transfected with KYAT1 cDNA clone (Cat# [RC225677]) using MegaTran 2.0 (Cat# [TT210002]).