

Product datasheet for **TP325664M**

alpha 1 Antitrypsin (SERPINA1) (NM_001127707) Human Recombinant Protein

Product data:

Product Type:	Recombinant Proteins
Description:	Purified recombinant protein of Homo sapiens serpin peptidase inhibitor, clade A (alpha-1 antiproteinase, antitrypsin), member 1 (SERPINA1), transcript variant 11, 100 µg
Species:	Human
Expression Host:	HEK293T
Expression cDNA Clone or AA Sequence:	>RC225664 protein sequence Red =Cloning site Green =Tags(s)
	<p>MPSSVSWGILLLAGLCLLPVSLAEDPQGDAAQKTDTSHHQDHPFNKITPNLAEFASFSLYRQLAHQSN STNIFFSPVSIATAFAMLSLGTKADTHDEILEGLNFNLTEIPEAQIHEGFQELLRTLNPDSQLQLTTGN GLFLSEGLKLVDFLEDVKKLYHSEFTVNFVGDTEEAKQINDYVEKGTQGKIVDLVKELDRDVFALVN YIFFKKGWERPFVEKDTTEEDFHVDQVTTVKVPMMKRLGMFNIQHCKKLSSWVLLMKYLGNATAIFFLPD EGKLQHLLENLTHDIITKFLNEDRRSASLHLPKLSITGTYDLKSVLGGQLGITKVFNSGADLSGVTEEAP LKLSKAVHKAVLTIDEKGTAAAGAMFLEAIPMSIPPEVKFNKPFVFLMIDQNTKSPLFMGKVVNPTQK</p> <p>TRTRPLEQKLISEEDLAANDILDYKDDDDKV</p>
Tag:	C-Myc/DDK
Predicted MW:	44.3 kDa
Concentration:	>0.05 µg/µL as determined by microplate BCA method
Purity:	> 80% as determined by SDS-PAGE and Coomassie blue staining
Buffer:	25 mM Tris-HCl, 100 mM glycine, pH 7.3, 10% glycerol
Preparation:	Recombinant protein was captured through anti-DDK affinity column followed by conventional chromatography steps.
Note:	For testing in cell culture applications, please filter before use. Note that you may experience some loss of protein during the filtration process.
Storage:	Store at -80°C.
Stability:	Stable for 12 months from the date of receipt of the product under proper storage and handling conditions. Avoid repeated freeze-thaw cycles.
RefSeq:	NP_001121179



[View online »](#)

Locus ID: 5265

UniProt ID: [P01009](#), [E9KL23](#)

RefSeq Size: 3300

Cytogenetics: 14q32.13

RefSeq ORF: 1254

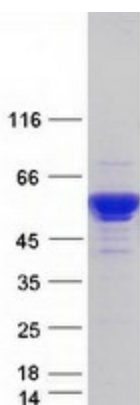
Synonyms: A1A; A1AT; AAT; alpha1AT; nNIF; PI; PI1; PRO2275

Summary: The protein encoded by this gene is a serine protease inhibitor belonging to the serpin superfamily whose targets include elastase, plasmin, thrombin, trypsin, chymotrypsin, and plasminogen activator. This protein is produced in the liver, the bone marrow, by lymphocytic and monocytic cells in lymphoid tissue, and by the Paneth cells of the gut. Defects in this gene are associated with chronic obstructive pulmonary disease, emphysema, and chronic liver disease. Several transcript variants encoding the same protein have been found for this gene. [provided by RefSeq, Aug 2020]

Protein Families: Druggable Genome, ES Cell Differentiation/IPS, Secreted Protein

Protein Pathways: Complement and coagulation cascades

Product images:



Coomassie blue staining of purified SERPINA1 protein (Cat# [TP325664]). The protein was produced from HEK293T cells transfected with SERPINA1 cDNA clone (Cat# [RC225664]) using MegaTran 2.0 (Cat# [TT210002]).