

## Product datasheet for TP325644L

### LAMP2 (NM\_001122606) Human Recombinant Protein

#### Product data:

|                                       |  |
|---------------------------------------|--|
| Product Type:                         | Recombinant Proteins   |
| Description:                          | Purified recombinant protein of Homo sapiens lysosomal-associated membrane protein 2 (LAMP2), transcript variant C, 1 mg |
| Species:                              | Human  |
| Expression Host:                      | HEK293T  |
| Expression cDNA Clone or AA Sequence: | >RC225644 representing NM_001122606<br>Red=Cloning site Green=Tags(s)  |

MVCFRLFPVPGSGLVLVCLVLGAVRSYALELNLTDSENATCLYAKWQMNFTVRYETTNNKYKTVTISDHG  
TVTYNGSICGDDQNGPKIAVQFGPGFSWIANFTKAASTYSIDSVSFSYNTGDNTTFPDAEDKGILTVEL  
LAIRIPLNDLFRCNLSLSTLEKNDVQHYWDVLVQAFVQNGTVSTNEFLCDKDKTSTVAPTIHTTVSPPTT  
TPTPEKPEAGTYSVNNGNDTCLLATMGLQLNITQDKVASVININPNTHTSTGSCRSHALLRLNSSTIK  
YLDFVFAVKNENRFYLKEVNISMVYLVNGSVFSIANNLSYWDAPLGSSYMCNKEQTVSVSGAFQINTFDL  
RVQPFNVTQGKYSTAEECSADSDLNFLIPVAVGVALGFLIIVFISYMIGRRKSRRTGYQSV

TRTRPLEQKLISEEDLAANDILDYKDDDDKV

|                |  |
|----------------|--|
| Tag:           | C-Myc/DDK  |
| Predicted MW:  | 42.2 kDa   |
| Concentration: | >0.05 µg/µL as determined by microplate BCA method   |
| Purity:        | > 80% as determined by SDS-PAGE and Coomassie blue staining  |
| Buffer:        | 25 mM Tris-HCl, 100 mM glycine, pH 7.3, 10% glycerol   |
| Preparation:   | Recombinant protein was captured through anti-DDK affinity column followed by conventional chromatography steps.                                     |
| Note:          | For testing in cell culture applications, please filter before use. Note that you may experience some loss of protein during the filtration process. |
| Storage:       | Store at -80°C.  |
| Stability:     | Stable for 12 months from the date of receipt of the product under proper storage and handling conditions. Avoid repeated freeze-thaw cycles.        |
| RefSeq:        | <a href="#">NP_001116078</a>   |



[View online »](#)

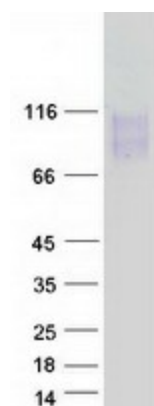
Locus ID: 3920  
UniProt ID: [P13473](#)  
Cytogenetics: Xq24  
RefSeq ORF: 1233  
Synonyms: CD107b; DND; LAMP-2; LAMPB; LGP-96; LGP110

**Summary:** The protein encoded by this gene is a member of a family of membrane glycoproteins. This glycoprotein provides selectins with carbohydrate ligands. It may play a role in tumor cell metastasis. It may also function in the protection, maintenance, and adhesion of the lysosome. Alternative splicing of this gene results in multiple transcript variants encoding distinct proteins. [provided by RefSeq, Jul 2008]

**Protein Families:** Druggable Genome, ES Cell Differentiation/IPS, Transmembrane

**Protein Pathways:** Lysosome

### Product images:



Coomassie blue staining of purified LAMP2 protein (Cat# [TP325644]). The protein was produced from HEK293T cells transfected with LAMP2 cDNA clone (Cat# [RC225644]) using MegaTran 2.0 (Cat# [TT210002]).