

Product datasheet for TP325644

LAMP2 (NM_001122606) Human Recombinant Protein

Product data:

Product Type:	Recombinant Proteins
Description:	Purified recombinant protein of Homo sapiens lysosomal-associated membrane protein 2 (LAMP2), transcript variant C, 20 µg
Species:	Human
Expression Host:	HEK293T
Expression cDNA Clone or AA Sequence:	>RC225644 representing NM_001122606 Red=Cloning site Green=Tags(s)

MVCFRLFPVPGSGLVLVCLVLGAVRSYALELNLTDSENATCLYAKWQMNFTVRYETTNNKTYKTVTISDHG
TVTYNGSICGDDQNGPKIAVQFGPGFSWIANFTKAASTYSIDSVSFSYNTGDNTTFPDAEDKGLTVDL
LAIRIPLNDLFRCSLSTLEKNDVQHYWDVLVQAFVQNGTVSTNEFLCDKDKTSTVAPTIHTTVSPPTT
TPTPEKPEAGTYSVNNGNDTCLLATMGLQLNITQDKVASVININPNTTHSTGSCRSHALLRLNSSTIK
YLDFVFAVKNENRFYLKEVNISMVYLVNGSVFSIANNLSYWDAPLGSSYMCNKEQTVSVSGAFQINTFDL
RVQPFNVTQGKYSTAEECSADSDLNFLIPVAVGVALGFLIIVFISYMIGRRKRSRTGYQSV

TRTRPLEQKLISEEDLAANDILDYKDDDDKV

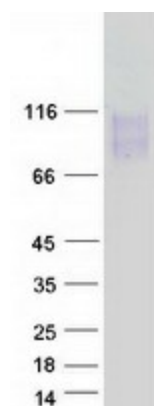
Tag:	C-Myc/DDK
Predicted MW:	42.2 kDa
Concentration:	>0.05 µg/µL as determined by microplate BCA method
Purity:	> 80% as determined by SDS-PAGE and Coomassie blue staining
Buffer:	25 mM Tris-HCl, 100 mM glycine, pH 7.3, 10% glycerol
Preparation:	Recombinant protein was captured through anti-DDK affinity column followed by conventional chromatography steps.
Note:	For testing in cell culture applications, please filter before use. Note that you may experience some loss of protein during the filtration process.
Storage:	Store at -80°C.
Stability:	Stable for 12 months from the date of receipt of the product under proper storage and handling conditions. Avoid repeated freeze-thaw cycles.
RefSeq:	<u>NP_001116078</u>



[View online »](#)

Locus ID:	3920
UniProt ID:	P13473
Cytogenetics:	Xq24
RefSeq ORF:	1233
Synonyms:	CD107b; DND; LAMP-2; LAMPB; LGP-96; LGP110
Summary:	The protein encoded by this gene is a member of a family of membrane glycoproteins. This glycoprotein provides selectins with carbohydrate ligands. It may play a role in tumor cell metastasis. It may also function in the protection, maintenance, and adhesion of the lysosome. Alternative splicing of this gene results in multiple transcript variants encoding distinct proteins. [provided by RefSeq, Jul 2008]
Protein Families:	Druggable Genome, ES Cell Differentiation/IPS, Transmembrane
Protein Pathways:	Lysosome

Product images:



Coomassie blue staining of purified LAMP2 protein (Cat# TP325644). The protein was produced from HEK293T cells transfected with LAMP2 cDNA clone (Cat# [RC225644]) using MegaTran 2.0 (Cat# [TT210002]).