

## Product datasheet for TP325626

### CRPPA (NM\_001101417) Human Recombinant Protein

#### Product data:

Product Type:	Recombinant Proteins
Description:	Recombinant protein of human notch1-induced protein (LOC729920), transcript variant 2, 20 µg
Species:	Human
Expression Host:	HEK293T
Expression cDNA Clone or AA Sequence:	>RC225626 representing NM_001101417 <b>Red</b> =Cloning site <b>Green</b> =Tags(s)

MEAGPPGSARPAEPGPCLSGQRGADHTASASLQSVAGTEPGRHPQAVAAVLPAGGCGERMGVPTPKQFCP  
ILERPLISYTLQALERVWCWIKDIVVAVTGENMEVMKSIIQKYQHKRISLVEAGVTRHRSIFNGLKALAED  
QINSKLSKPEVIIHDAVRPFVEEGVLLKVVTAAKEHGCSYDLEFGTECLQLALKYCCTKAKLVEGSPD  
LWKVTKRDLYAAESIKERISQEICVMDTEEDNKHVGHLLLEEVLKSELNHVKVTSEALGHAGRHLQOI  
ILDQCYNFVCVNVTTSDFQETQKLLSMLESSLCILYPVVVSVHFLDFKLVPPSQKMENLMQIREFAKE  
VKERNILLYGLLISYPQDDQKLQESLRQGAIIIASLIKERNSSGLIGQLLIA

**TRTRPLEQKLISEEDLAANDILDYKDDDDKV**

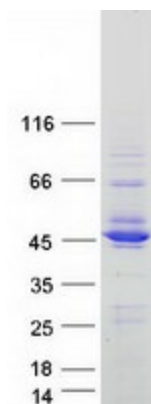
Tag:	C-Myc/DDK
Predicted MW:	44.2 kDa
Concentration:	>0.05 µg/µL as determined by microplate BCA method
Purity:	> 80% as determined by SDS-PAGE and Coomassie blue staining
Buffer:	25 mM Tris-HCl, 100 mM glycine, pH 7.3, 10% glycerol
Preparation:	Recombinant protein was captured through anti-DDK affinity column followed by conventional chromatography steps.
Note:	For testing in cell culture applications, please filter before use. Note that you may experience some loss of protein during the filtration process.
Storage:	Store at -80°C.
Stability:	Stable for 12 months from the date of receipt of the product under proper storage and handling conditions. Avoid repeated freeze-thaw cycles.
RefSeq:	<a href="#">NP_001094887</a>
Locus ID:	729920



[View online »](#)

UniProt ID:	<a href="#">A4D126</a> , <a href="#">A0A140VJM1</a>
Cytogenetics:	7p21.2
RefSeq ORF:	1203
Synonyms:	hISPD; ISPD; LGMDR20; MDDGA7; MDDGC7; Nip
Summary:	This gene encodes a 2-C-methyl-D-erythritol 4-phosphate cytidyltransferase-like protein. Mutations in this gene are the cause of Walker-Warburg syndrome. Alternate splicing results in multiple transcript variants. [provided by RefSeq, May 2012]

### Product images:



Coomassie blue staining of purified CRPPA protein (Cat# TP325626). The protein was produced from HEK293T cells transfected with CRPPA cDNA clone (Cat# [RC225626]) using MegaTran 2.0 (Cat# [TT210002]).