

## Product datasheet for TP325548L

### SUGT1 (NM\_001130912) Human Recombinant Protein

#### Product data:

Product Type:	Recombinant Proteins
Description:	Purified recombinant protein of Homo sapiens SGT1, suppressor of G2 allele of SKP1 ( <i>S. cerevisiae</i> ) (SUGT1), transcript variant 1, 1 mg
Species:	Human
Expression Host:	HEK293T
Expression cDNA Clone or AA Sequence:	>RC225548 representing NM_001130912 Red=Cloning site Green=Tags(s)
	<p>MAAAAAGTATSQRFFQSFSDALIDEDPQAAL EELTKALEQKPDDAQYYCQRAYCHILLGNYCVAVADAKK SLELNPNNSTAMLRKGICEYHEKNYAAALETFTEGQKLDIETGFHRVGGAGLQLLTSSDPPALDSQSAGI TGADANFSVWIKRCQEAQNGSESEVWTHQSKIYDWYQTESQVITLMIKNVQKNDVNVEFSEKELSALV KLPSGEDYNLKLLELLHPIIEQSTFKVLSTKIEIKLKKPEAVRWEKLEGQGDVPTPKQFVADVKNLYPSS SPYTRNWDKLVGEIKEEEKNEKLEGDAALNRLFQQIYSDGSDEVKRAMNKSFMESGGTVLSTNWSVDVGKR KVEINPPDDMEWKKY</p> <p>TRTRPLEQKLISEEDLAANDILDYKDDDDKV</p>
Tag:	C-Myc/DDK
Predicted MW:	40.8 kDa
Concentration:	>0.05 µg/µL as determined by microplate BCA method
Purity:	> 80% as determined by SDS-PAGE and Coomassie blue staining
Buffer:	25 mM Tris-HCl, 100 mM glycine, pH 7.3, 10% glycerol
Preparation:	Recombinant protein was captured through anti-DDK affinity column followed by conventional chromatography steps.
Note:	For testing in cell culture applications, please filter before use. Note that you may experience some loss of protein during the filtration process.
Storage:	Store at -80°C.
Stability:	Stable for 12 months from the date of receipt of the product under proper storage and handling conditions. Avoid repeated freeze-thaw cycles.
RefSeq:	<a href="#">NP_001124384</a>



[View online »](#)

Locus ID: 10910

UniProt ID: [Q9Y2Z0](#), [A8K7W3](#)

Cytogenetics: 13q14.3

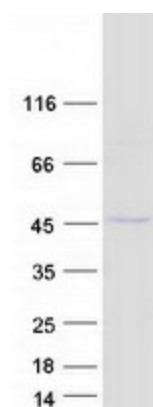
RefSeq ORF: 1095

Synonyms: SGT1

**Summary:** This gene encodes a highly conserved nuclear protein involved in kinetochore function and required for the G1/S and G2/M transitions. This protein interacts with heat shock protein 90. Alternative splicing results in multiple transcript variants. Pseudogenes for this gene have been defined on several different chromosomes. [provided by RefSeq, Mar 2016]

**Protein Pathways:** NOD-like receptor signaling pathway

### Product images:



Coomassie blue staining of purified SUGT1 protein (Cat# [TP325548]). The protein was produced from HEK293T cells transfected with SUGT1 cDNA clone (Cat# [RC225548]) using MegaTran 2.0 (Cat# [TT210002]).