

## Product datasheet for **TP325453M**

### Heme oxygenase 2 (HMOX2) (NM\_001127206) Human Recombinant Protein

#### Product data:

Product Type:	Recombinant Proteins
Description:	Purified recombinant protein of Homo sapiens heme oxygenase (decycling) 2 (HMOX2), transcript variant 4, 100 µg
Species:	Human
Expression Host:	HEK293T
Expression cDNA Clone or AA Sequence:	>RC225453 protein sequence <b>Red</b> =Cloning site <b>Green</b> =Tags(s)
	MSAEVETSEGVDESEKKNSGALEKENQMRMADLSELLKEGTKEAHDRAENTQFVKDFLKGNIKKELFKLATTALYFTYSALLEEMERNKDHAPAFAPLYFPMELHRKEALTKDMEYFFGENWEEQVQCPKAAQKYVERIHYIGQNEPELLVAHAYTRYMGDLSGGQVLKKAQRALKLPSTGEGTQFYLFENVDNAQQFKQLYRARMNALDLNMKTKERIVEEANKAFEYNMQIFNELDQAGSTLARETLEDGFPVHDGKGDMRKCPFYAAEQDKGALEGS SCPFRTAMAVLRKPSLQFILAAGVALAAGLLAWYYM
	<b>TRTRPLEQKLISEEDLAANDILDYKDDDDKV</b>
Tag:	C-Myc/DDK
Predicted MW:	35.9 kDa
Concentration:	>0.05 µg/µL as determined by microplate BCA method
Purity:	> 80% as determined by SDS-PAGE and Coomassie blue staining
Buffer:	25 mM Tris-HCl, 100 mM glycine, pH 7.3, 10% glycerol
Preparation:	Recombinant protein was captured through anti-DDK affinity column followed by conventional chromatography steps.
Note:	For testing in cell culture applications, please filter before use. Note that you may experience some loss of protein during the filtration process.
Storage:	Store at -80°C.
Stability:	Stable for 12 months from the date of receipt of the product under proper storage and handling conditions. Avoid repeated freeze-thaw cycles.
RefSeq:	<u><a href="#">NP_001120678</a></u>
Locus ID:	3163



[View online »](#)

UniProt ID: [P30519](#)

RefSeq Size: 1751

Cytogenetics: 16p13.3

RefSeq ORF: 948

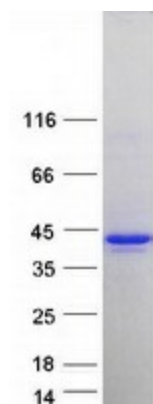
Synonyms: HO-2

**Summary:** Heme oxygenase, an essential enzyme in heme catabolism, cleaves heme to form biliverdin, which is subsequently converted to bilirubin by biliverdin reductase, and carbon monoxide, a putative neurotransmitter. Heme oxygenase activity is induced by its substrate heme and by various nonheme substances. Heme oxygenase occurs as 2 isozymes, an inducible heme oxygenase-1 and a constitutive heme oxygenase-2. HMOX1 and HMOX2 belong to the heme oxygenase family. Several alternatively spliced transcript variants encoding three different isoforms have been found for this gene. [provided by RefSeq, Oct 2013]

**Protein Families:** Transmembrane

**Protein Pathways:** Porphyrin and chlorophyll metabolism

### Product images:



Coomassie blue staining of purified HMOX2 protein (Cat# [TP325453]). The protein was produced from HEK293T cells transfected with HMOX2 cDNA clone (Cat# [RC225453]) using MegaTran 2.0 (Cat# [TT210002]).