

## Product datasheet for **TP325414**

### **HYLS1 (NM\_001134793) Human Recombinant Protein**

#### **Product data:**

<b>Product Type:</b>	Recombinant Proteins
<b>Description:</b>	Recombinant protein of human hydrolethalus syndrome 1 (HYLS1), transcript variant 2, 20 µg
<b>Species:</b>	Human
<b>Expression Host:</b>	HEK293T
<b>Expression cDNA Clone or AA Sequence:</b>	>RC225414 protein sequence <b>Red</b> =Cloning site <b>Green</b> =Tags(s)
	 MDPEERMLAAATAFTHIRAGQGEGDVRREAQSIQYDPYSKASVAPGKRPALPVQLQYPHVESNVPSETVS EASQRLRKPVMKRKVLRRKPDGEVLVTDESIIESESGTENDQDLWDLRQRLMNVQFQEDKESFDVSQK FNLPEYQGISQDQLICSLQREGMGSPAYEQDLIVASRPKSFILPKLDQLSRNRGKTRVARYFEYKRDW DSIRLPGEDHRKELRWGVREQMLCRAEPQSKPQHIVPNNYLVPTTEKKRSALRWGVRCDLANGVIPRKL FPLSPS  <b>TRTRPLEQKLISEEDLAANDILDYKDDDDKV</b>
<b>Tag:</b>	C-Myc/DDK
<b>Predicted MW:</b>	34.2 kDa
<b>Concentration:</b>	>0.05 µg/µL as determined by microplate BCA method
<b>Purity:</b>	> 80% as determined by SDS-PAGE and Coomassie blue staining
<b>Buffer:</b>	25 mM Tris-HCl, 100 mM glycine, pH 7.3, 10% glycerol
<b>Preparation:</b>	Recombinant protein was captured through anti-DDK affinity column followed by conventional chromatography steps.
<b>Note:</b>	For testing in cell culture applications, please filter before use. Note that you may experience some loss of protein during the filtration process.
<b>Storage:</b>	Store at -80°C.
<b>Stability:</b>	Stable for 12 months from the date of receipt of the product under proper storage and handling conditions. Avoid repeated freeze-thaw cycles.
<b>RefSeq:</b>	<u><a href="#">NP_001128265</a></u>
<b>Locus ID:</b>	219844



[View online »](#)

UniProt ID: [Q96M11](#), [A0A024R3K0](#)

RefSeq Size: 2073

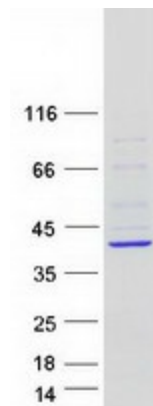
Cytogenetics: 11q24.2

RefSeq ORF: 858

Synonyms: HLS

**Summary:** This gene encodes a protein localized to the cytoplasm. Mutations in this gene are associated with hydrolethalus syndrome. Multiple alternatively spliced variants, encoding the same protein, have been identified. [provided by RefSeq, Oct 2008]

### Product images:



Coomassie blue staining of purified HYLS1 protein (Cat# TP325414). The protein was produced from HEK293T cells transfected with HYLS1 cDNA clone (Cat# [RC225414]) using MegaTran 2.0 (Cat# [TT210002]).