

Product datasheet for **TP325378M**

CLEC12B (NM_001129998) Human Recombinant Protein

Product data:

Product Type: Recombinant Proteins

Description: Recombinant protein of human C-type lectin domain family 12, member B (CLEC12B), transcript variant 1, 100 µg

Species: Human

Expression Host: HEK293T

Expression cDNA Clone or AA Sequence: >RC225378 representing NM_001129998
Red=Cloning site **Green**=Tags(s)

MSEEVTYATLTFQDSAGARNNRDGNLNRKRGHPAPSPIWRHAALGLVTLCLMLLIGLVTLGMMFLQISND
INSDSEKLSQLQKTIQQQDNLSQQLGNSNNLSMEEFLKSQISSVLKRQEQMAIKLCQELIIHTSDHRC
NPCPKMWQWYQNSCYFTTNEEKTWANSRKCIDKNSTLVKIDSLEEKDFLMSQPLLMFSFFWLGLSWDS
SGRSWFWEDGSVPSPLFSTKELDQINGSKGCAYFQKGNIIYSRCSAEIFWICEKTAAPVKTEDLD

TRTRPLEQKLISEEDLAANDILDYKDDDDKV

Tag: C-Myc/DDK

Predicted MW: 31.4 kDa

Concentration: >0.05 µg/µL as determined by microplate BCA method

Purity: > 80% as determined by SDS-PAGE and Coomassie blue staining

Buffer: 25 mM Tris-HCl, 100 mM glycine, pH 7.3, 10% glycerol

Preparation: Recombinant protein was captured through anti-DDK affinity column followed by conventional chromatography steps.

Note: For testing in cell culture applications, please filter before use. Note that you may experience some loss of protein during the filtration process.

Storage: Store at -80°C.

Stability: Stable for 12 months from the date of receipt of the product under proper storage and handling conditions. Avoid repeated freeze-thaw cycles.

RefSeq: [NP_001123470](#)

Locus ID: 387837



[View online »](#)

UniProt ID: [Q2HXU8](#), [A0A140VK10](#)

Cytogenetics: 12p13.2

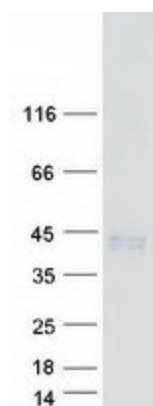
RefSeq ORF: 828

Synonyms: UNQ5782

Summary: Cell surface receptor that protects target cells against natural killer cell-mediated lysis. Modulates signaling cascades and mediates tyrosine phosphorylation of target MAP kinases. [UniProtKB/Swiss-Prot Function]

Protein Families: Transmembrane

Product images:



Coomassie blue staining of purified CLEC12B protein (Cat# [TP325378]). The protein was produced from HEK293T cells transfected with CLEC12B cDNA clone (Cat# [RC225378]) using MegaTran 2.0 (Cat# [TT210002]).