

Product datasheet for **TP325378L**

CLEC12B (NM_001129998) Human Recombinant Protein

Product data:

Product Type:	Recombinant Proteins
Description:	Recombinant protein of human C-type lectin domain family 12, member B (CLEC12B), transcript variant 1, 1 mg
Species:	Human
Expression Host:	HEK293T
Expression cDNA Clone or AA Sequence:	>RC225378 representing NM_001129998 Red =Cloning site Green =Tags(s)
	<p>MSEEVTYATLTFQDSAGARNNRDGNLNRKRGHPAPSPIWRHAALGLVTLCLMLLIGLVTLGMMFLQISND INSDSEKLSQLQKTIQQQDNLSQQLGNSNNLSMEEFLKSQISSVLKRQEQMAIKLCQELIIHTSDHRC NPCPKMWQWYQNSCYFTTNEEKTWANSRKCIDKNSTLVKIDSLEEKDFLMSQPLLMFSFFWLGLSWDS SGRSWFWEDGSVPSPLFSTKELDQINGSKGCAYFQKGNIIYSRCSAEIFWICEKTAAPVKTEDLD</p> <p>TRTRPLEQKLISEEDLAANDILDYKDDDDKV</p>
Tag:	C-Myc/DDK
Predicted MW:	31.4 kDa
Concentration:	>0.05 µg/µL as determined by microplate BCA method
Purity:	> 80% as determined by SDS-PAGE and Coomassie blue staining
Buffer:	25 mM Tris-HCl, 100 mM glycine, pH 7.3, 10% glycerol
Preparation:	Recombinant protein was captured through anti-DDK affinity column followed by conventional chromatography steps.
Note:	For testing in cell culture applications, please filter before use. Note that you may experience some loss of protein during the filtration process.
Storage:	Store at -80°C.
Stability:	Stable for 12 months from the date of receipt of the product under proper storage and handling conditions. Avoid repeated freeze-thaw cycles.
RefSeq:	<u>NP_001123470</u>
Locus ID:	387837



[View online »](#)

UniProt ID: [Q2HXU8](#), [A0A140VK10](#)

Cytogenetics: 12p13.2

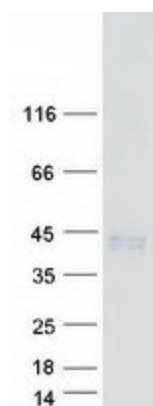
RefSeq ORF: 828

Synonyms: UNQ5782

Summary: Cell surface receptor that protects target cells against natural killer cell-mediated lysis. Modulates signaling cascades and mediates tyrosine phosphorylation of target MAP kinases. [UniProtKB/Swiss-Prot Function]

Protein Families: Transmembrane

Product images:



Coomassie blue staining of purified CLEC12B protein (Cat# [TP325378]). The protein was produced from HEK293T cells transfected with CLEC12B cDNA clone (Cat# [RC225378]) using MegaTran 2.0 (Cat# [TT210002]).