

## Product datasheet for TP325362L

### HCCS (NM\_001122608) Human Recombinant Protein

#### Product data:

Product Type:	Recombinant Proteins
Description:	Recombinant protein of human holo-cytochrome c synthase (cytochrome c heme-lyase) (HCCS), 1 mg
Species:	Human
Expression Host:	HEK293T
Expression cDNA	>RC225362 representing NM_001122608
Clone or AA Sequence:	Red=Cloning site Green=Tags(s)

MGLSPSAPAVAVQASNASASPPSGCPMHEGKMKGCPVNTPEPSGPTCEKKTYSVPAHQERAYEYVECP  
TAAENKENLDPSNLMPPPNQTPAPDQPFALSTVREESSIPRADSEKKWVYPSEQMFWNAMLKKGWKWKDE  
DISQKDMYNIIRIHQNNEQAWKEILKWEALHAAECPCGPSLIRFGGKAKEYSPRARIRSWMGYELPFDR  
HDWIINRCGTEVRYVIDYYDGGEVNKDYQFTILDVRPALDSLAVWDRMKVAWWRWTS

TRTRPLEQKLISEEDLAANDILDYKDDDDKV

Tag:	C-Myc/DDK
Predicted MW:	30.4 kDa
Concentration:	>0.05 µg/µL as determined by microplate BCA method
Purity:	> 80% as determined by SDS-PAGE and Coomassie blue staining
Buffer:	25 mM Tris-HCl, 100 mM glycine, pH 7.3, 10% glycerol
Preparation:	Recombinant protein was captured through anti-DDK affinity column followed by conventional chromatography steps.
Note:	For testing in cell culture applications, please filter before use. Note that you may experience some loss of protein during the filtration process.
Storage:	Store at -80°C.
Stability:	Stable for 12 months from the date of receipt of the product under proper storage and handling conditions. Avoid repeated freeze-thaw cycles.
RefSeq:	<a href="#">NP_001116080</a>
Locus ID:	3052



[View online »](#)

UniProt ID: [P53701](#), [A0A024RBY9](#)

Cytogenetics: Xp22.2

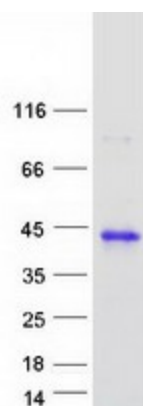
RefSeq ORF: 804

Synonyms: CCHL; LSDMCA1; MCOPS7; MLS

**Summary:** The protein encoded by this gene is an enzyme that covalently links a heme group to the apoprotein of cytochrome c. Defects in this gene are a cause of microphthalmia syndromic type 7 (MCOPS7). Three transcript variants encoding the same protein have been found for this gene. [provided by RefSeq, Jan 2010]

**Protein Pathways:** Porphyrin and chlorophyll metabolism

### Product images:



Coomassie blue staining of purified HCCS protein (Cat# [TP325362]). The protein was produced from HEK293T cells transfected with HCCS cDNA clone (Cat# [RC225362]) using MegaTran 2.0 (Cat# [TT210002]).