

Product datasheet for **TP325306**

SYCE1L (NM_001129979) Human Recombinant Protein

Product data:

Product Type:	Recombinant Proteins
Description:	Recombinant protein of human hypothetical protein LOC100130958 (LOC100130958), 20 µg
Species:	Human
Expression Host:	HEK293T
Expression cDNA Clone or AA Sequence:	>RC225306 representing NM_001129979 Red =Cloning site Green =Tags(s)

MAGKCLKPLNVEAPEATEEEAEGQAQSLKTEDLLAMVIKLQKEGSLEPQIEDLISRINDLQQAQKKSSSEELR
ETHSLWEALHRELDLNGEKVHLEEVLGKKQEALRILQMHCQEKESEAQRLDVRGQLEDLMGQHKDLWFEF
HMLEQRLAREIRALERSKEQLLSERRLVRAKLREVERRLHSPPEVEGAMAVNDGLKAELEIFGEQVRSAP
EVGAGEGEAGPELPRARDEEDPEPPVAAPDAL

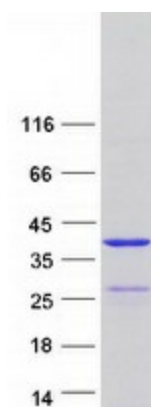
TRTRPLEQKLISEEDLAANDILDYKDDDDKV

Tag:	C-Myc/DDK
Predicted MW:	27.2 kDa
Concentration:	>0.05 µg/µL as determined by microplate BCA method
Purity:	> 80% as determined by SDS-PAGE and Coomassie blue staining
Buffer:	25 mM Tris-HCl, 100 mM glycine, pH 7.3, 10% glycerol
Preparation:	Recombinant protein was captured through anti-DDK affinity column followed by conventional chromatography steps.
Note:	For testing in cell culture applications, please filter before use. Note that you may experience some loss of protein during the filtration process.
Storage:	Store at -80°C.
Stability:	Stable for 12 months from the date of receipt of the product under proper storage and handling conditions. Avoid repeated freeze-thaw cycles.
RefSeq:	NP_001123451
Locus ID:	100130958
UniProt ID:	A8MT33



[View online »](#)

Cytogenetics:	16q23.1
RefSeq ORF:	726
Synonyms:	MRP2
Summary:	May be involved in meiosis.[UniProtKB/Swiss-Prot Function]

Product images:

Coomassie blue staining of purified SYCE1L protein (Cat# TP325306). The protein was produced from HEK293T cells transfected with SYCE1L cDNA clone (Cat# [RC225306]) using MegaTran 2.0 (Cat# [TT210002]).