

## Product datasheet for **TP325305**

### SETBP1 (NM\_001130110) Human Recombinant Protein

#### Product data:

Product Type:	Recombinant Proteins
Description:	Recombinant protein of human SET binding protein 1 (SETBP1), transcript variant 2, 20 µg
Species:	Human
Expression Host:	HEK293T
Expression cDNA Clone or AA Sequence:	>RC225305 representing NM_001130110 <b>Red</b> =Cloning site <b>Green</b> =Tags(s)
	MESRETLSSSRQRGGESDFLPVSSAKPPAAPGCAGEPLLSTPGPGKGIPVGGGERMEPEEDELGSGRDVD SNSNADSEKWWAGDGLLEEQFSIKEANFTEGSLKLIQTTKRAKKPPKNLENYICPPEIKITIKQSGDQK VSRAGKNSKATKEEERSHSHKLLTASDLAASDLKGFQPQIKDSSKEEVWKRGGQGIPFKKQFLSQERA MCFSCPRNPFPAKPGSLTLPFHSEPAVWAQEV
	<b>TR</b> TRPLEQKLISEEDLAANDILDYKDDDDKV
Tag:	C-Myc/DDK
Predicted MW:	26.2 kDa
Concentration:	>0.05 µg/µL as determined by microplate BCA method
Purity:	> 80% as determined by SDS-PAGE and Coomassie blue staining
Buffer:	25 mM Tris-HCl, 100 mM glycine, pH 7.3, 10% glycerol
Preparation:	Recombinant protein was captured through anti-DDK affinity column followed by conventional chromatography steps.
Note:	For testing in cell culture applications, please filter before use. Note that you may experience some loss of protein during the filtration process.
Storage:	Store at -80°C.
Stability:	Stable for 12 months from the date of receipt of the product under proper storage and handling conditions. Avoid repeated freeze-thaw cycles.
RefSeq:	<a href="#">NP_001123582</a>
Locus ID:	26040
UniProt ID:	<a href="#">Q9Y6X0</a>



[View online »](#)

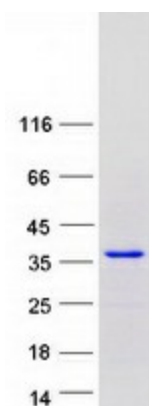
Cytogenetics: 18q12.3

RefSeq ORF: 726

Synonyms: MRD29; SEB

**Summary:** This gene encodes a protein which contains a several motifs including a ski homology region and a SET-binding region in addition to three nuclear localization signals. The encoded protein has been shown to bind the SET nuclear oncogene which is involved in DNA replication. Mutations in this gene are associated with Schinzel-Giedion midface retraction syndrome. Multiple transcript variants encoding different isoforms have been found for this gene. [provided by RefSeq, Aug 2011]

### Product images:



Coomassie blue staining of purified SETBP1 protein (Cat# TP325305). The protein was produced from HEK293T cells transfected with SETBP1 cDNA clone (Cat# [RC225305]) using MegaTran 2.0 (Cat# [TT210002]).