

Product datasheet for TP325273L

STYX (NM_001130701) Human Recombinant Protein

Product data:

Product Type:	Recombinant Proteins
Description:	Recombinant protein of human serine/threonine/tyrosine interacting protein (STYX), transcript variant 2, 1 mg
Species:	Human
Expression Host:	HEK293T
Expression cDNA Clone or AA Sequence:	>RC225273 protein sequence Red=Cloning site Green=Tags(s)
	<p>MEDVKLEFPSPQPCKEDAEWYTPMRREMQEILPGLFLGPYSSAMKSKLPVLQKHGITHIICIRQNIEN FIKPNFQQLFRYLVLADIADNPVENIIRFFPMTKEFIDGSLQMGGKVLVHGNAGISRSAAFVIAYIMETFG MKYRDAAFAYVQERRFCINPNAGFVHQLQEYEAIIYLAKLTIQMMSPQLQIERSLSVHSGTTGSLKRTHEEED DFGTMQVATAQNG</p> <p>TRTRPLEQKLISEEDLAANDILDYKDDDDKV</p>
Tag:	C-Myc/DDK
Predicted MW:	25.3 kDa
Concentration:	>0.05 µg/µL as determined by microplate BCA method
Purity:	> 80% as determined by SDS-PAGE and Coomassie blue staining
Buffer:	25 mM Tris-HCl, 100 mM glycine, pH 7.3, 10% glycerol
Preparation:	Recombinant protein was captured through anti-DDK affinity column followed by conventional chromatography steps.
Note:	For testing in cell culture applications, please filter before use. Note that you may experience some loss of protein during the filtration process.
Storage:	Store at -80°C.
Stability:	Stable for 12 months from the date of receipt of the product under proper storage and handling conditions. Avoid repeated freeze-thaw cycles.
RefSeq:	NP_001124173
Locus ID:	6815



[View online »](#)

UniProt ID: [Q8WUJ0](#), [A0A024R641](#)

RefSeq Size: 4631

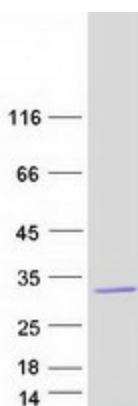
Cytogenetics: 14q22.1

RefSeq ORF: 669

Summary: The protein encoded by this gene is a pseudophosphatase, able to bind potential substrates but lacking an active catalytic loop. The encoded protein may be involved in spermiogenesis. Two transcript variants encoding the same protein have been found for these genes. [provided by RefSeq, Oct 2011]

Protein Families: Druggable Genome, Phosphatase

Product images:



Coomassie blue staining of purified STYX protein (Cat# [TP325273]). The protein was produced from HEK293T cells transfected with STYX cDNA clone (Cat# [RC225273]) using MegaTran 2.0 (Cat# [TT210002]).