

## Product datasheet for **TP325268L**

### PRR20D (NM\_001130406) Human Recombinant Protein

#### Product data:

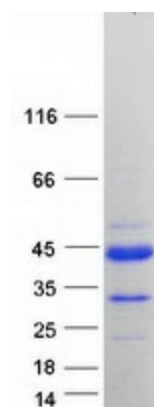
Product Type:	Recombinant Proteins
Description:	Purified recombinant protein of Homo sapiens FLJ40296 protein family member (LOC729246), 1 mg
Species:	Human
Expression Host:	HEK293T
Expression cDNA Clone or AA Sequence:	>RC225268 representing NM_001130406 <b>Red</b> =Cloning site <b>Green</b> =Tags(s)
	<p>MEEPRPSKRLRSMAPNQASGGPPPEPGCCVADPEGSVEADGPAQPAQPAKPIAYVKPFRRQPPARPESP P PAERGRRRGSSRRPGRGRRRAGPRGDAGQRQGAEGLMAPDVHIQLDHHGEPGHQGEPEITETAAFSL E TGPPPGTVQEGPGPDVAQPELGFQEPPAAPGPQAVDWQPVLTLYPCIGFRALGDSAVLQVIQTPQGTYV Q GVPVFLTDIAY</p> <p><b>TRTRPLEQKLISEEDLAANDILDYKDDDDKV</b></p>
Tag:	C-Myc/DDK
Predicted MW:	23.1 kDa
Concentration:	>0.05 µg/µL as determined by microplate BCA method
Purity:	> 80% as determined by SDS-PAGE and Coomassie blue staining
Buffer:	25 mM Tris-HCl, 100 mM glycine, pH 7.3, 10% glycerol
Preparation:	Recombinant protein was captured through anti-DDK affinity column followed by conventional chromatography steps.
Note:	For testing in cell culture applications, please filter before use. Note that you may experience some loss of protein during the filtration process.
Storage:	Store at -80°C.
Stability:	Stable for 12 months from the date of receipt of the product under proper storage and handling conditions. Avoid repeated freeze-thaw cycles.



[View online »](#)

RefSeq:	<u>NP_001123878</u>
Locus ID:	729246
UniProt ID:	<u>P86496</u>
Cytogenetics:	13q21.1
RefSeq ORF:	663
Synonyms:	PRR20; PRR20A; PRR20B; PRR20C; PRR20E
Summary:	This gene is one of five identical loci in a cluster on chromosome 13q21.1. The predicted protein is proline-rich and contains several dopamine D4 receptor signatures and PRINTS domains. [provided by RefSeq, Oct 2008]

### Product images:



Coomassie blue staining of purified PRR20D protein (Cat# [TP325268]). The protein was produced from HEK293T cells transfected with PRR20D cDNA clone (Cat# [RC225268]) using MegaTran 2.0 (Cat# [TT210002]).