

## Product datasheet for TP325263M

### Claudin 22 (CLDN22) (NM\_001111319) Human Recombinant Protein

#### Product data:

Product Type:	Recombinant Proteins
Description:	Recombinant protein of human claudin 22 (CLDN22), 100 µg
Species:	Human
Expression Host:	HEK293T
Expression cDNA Clone or AA Sequence:	>RC225263 representing NM_001111319 <b>Red</b> =Cloning site <b>Green</b> =Tags(s)
	MALVFRTVAQLAGVSLSLGWLSCLTNYLPHWKNLNLDLNEMENWTMGLWQTCVIEEVGMQCKDFDSF LALPAELRVSRILMFLSNGLGFLGLLVSGFGLDCLRIGESQRDLKRRLLILGGILSWASGVTALVPVSWV AHKTVQEFWDENVPDFVPRWEFGALFLGWFAGLSLLLGGCLLHCAACSSHAPLASGHYAVAQTQDHHQE LETRNTNLKH
	<b>TRTRPLEQKLISEEDLAANDILDYKDDDDKV</b>
Tag:	C-Myc/DDK
Predicted MW:	24.3 kDa
Concentration:	>0.05 µg/µL as determined by microplate BCA method
Purity:	> 80% as determined by SDS-PAGE and Coomassie blue staining
Buffer:	25 mM Tris-HCl, 100 mM glycine, pH 7.3, 10% glycerol
Preparation:	Recombinant protein was captured through anti-DDK affinity column followed by conventional chromatography steps.
Note:	For testing in cell culture applications, please filter before use. Note that you may experience some loss of protein during the filtration process.
Storage:	Store at -80°C.
Stability:	Stable for 12 months from the date of receipt of the product under proper storage and handling conditions. Avoid repeated freeze-thaw cycles.
RefSeq:	<a href="#">NP_001104789</a>
Locus ID:	53842
UniProt ID:	<a href="#">Q8N7P3</a>



[View online »](#)

Cytogenetics: 4q35.1

RefSeq ORF: 660

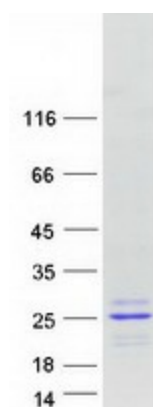
Synonyms: CLDN21

**Summary:** This gene encodes a member of the claudin family. Claudins are integral membrane proteins and components of tight junction strands. Tight junction strands serve as a physical barrier to prevent solutes and water from passing freely through the paracellular space between epithelial or endothelial cell sheets, and also play critical roles in maintaining cell polarity and signal transductions. This gene is intronless and overlaps the 3' UTR of the WWC2 gene (GeneID: 80014) on the opposite strand. [provided by RefSeq, Aug 2010]

**Protein Families:** Transmembrane

**Protein Pathways:** Cell adhesion molecules (CAMs), Leukocyte transendothelial migration, Tight junction

### Product images:



Coomassie blue staining of purified CLDN22 protein (Cat# [TP325263]). The protein was produced from HEK293T cells transfected with CLDN22 cDNA clone (Cat# [RC225263]) using MegaTran 2.0 (Cat# [TT210002]).