

Product datasheet for TP325261L

SYCE2 (NM_001105578) Human Recombinant Protein

Product data:

Product Type:	Recombinant Proteins
Description:	Recombinant protein of human synaptonemal complex central element protein 2 (SYCE2), 1 mg
Species:	Human
Expression Host:	HEK293T
Expression cDNA Clone or AA Sequence:	>RC225261 representing NM_001105578 Red =Cloning site Green =Tags(s)
	MERQGVDPVPHVKCKDQEPQPLGESKEHPRWEENCEEEAGGGPASASCQLTVLEGKSGLYFSSLDSSIDIL QKRAQELIENINKSRQKDHALMTNFRNSLTKVSDLTEKLEERIQIYNDHNKIIQEKLQEFTQKMAKIS HLETCLKVCHSVETVYKDLCLQPEQSLRLRWGPDHSRGKSPRPGNSQPPDVFVSSVAETTSQATASEV QTNRDGEC
	TRTRPLEQKLISEEDLAANDILDYKDDDDKV
Tag:	C-Myc/DDK
Predicted MW:	24.5 kDa
Concentration:	>0.05 µg/µL as determined by microplate BCA method
Purity:	> 80% as determined by SDS-PAGE and Coomassie blue staining
Buffer:	25 mM Tris-HCl, 100 mM glycine, pH 7.3, 10% glycerol
Preparation:	Recombinant protein was captured through anti-DDK affinity column followed by conventional chromatography steps.
Note:	For testing in cell culture applications, please filter before use. Note that you may experience some loss of protein during the filtration process.
Storage:	Store at -80°C.
Stability:	Stable for 12 months from the date of receipt of the product under proper storage and handling conditions. Avoid repeated freeze-thaw cycles.
RefSeq:	<u>NP_001099048</u>
Locus ID:	256126



[View online »](#)

UniProt ID: [Q6PIF2](#)

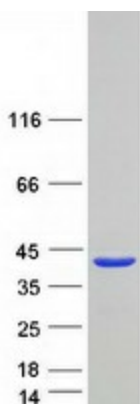
Cytogenetics: 19p13.13

RefSeq ORF: 654

Synonyms: CESC1

Summary: The protein encoded by this gene is part of the synaptonemal complex formed between homologous chromosomes during meiotic prophase. The encoded protein associates with SYCP1 and SYCE1 and is found only where chromosome cores are synapsed. [provided by RefSeq, Dec 2012]

Product images:



Coomassie blue staining of purified SYCE2 protein (Cat# [TP325261]). The protein was produced from HEK293T cells transfected with SYCE2 cDNA clone (Cat# [RC225261]) using MegaTran 2.0 (Cat# [TT210002]).