

Product datasheet for TP325261

SYCE2 (NM_001105578) Human Recombinant Protein

Product data:

| | |
|---------------------------------------|---|
| Product Type: | Recombinant Proteins |
| Description: | Recombinant protein of human synaptonemal complex central element protein 2 (SYCE2), 20 µg |
| Species: | Human |
| Expression Host: | HEK293T |
| Expression cDNA Clone or AA Sequence: | >RC225261 representing NM_001105578 Red =Cloning site Green =Tags(s) |
| | MERQGVDPVPHVKCKDQEPQPLGESKEHPRWEENCEEEAGGGPASASCQLTVLEGKSGLYFSSLDSSIDIL QKRAQELIENINKSRQKDHALMTNFRNSLTKVSDLTEKLEERIQIYNDHNKIQEKLQFTQKMAKIS HLETCLKVCHSVETVYKDLCLQPEQSLRLRWGPDHSRGKSPRPGNSQPPDVFVSSVAETTSQATASEV QTNRDGEC |
| | TRTRPLEQKLISEEDLAANDILDYKDDDDKV |
| Tag: | C-Myc/DDK |
| Predicted MW: | 24.5 kDa |
| Concentration: | >0.05 µg/µL as determined by microplate BCA method |
| Purity: | > 80% as determined by SDS-PAGE and Coomassie blue staining |
| Buffer: | 25 mM Tris-HCl, 100 mM glycine, pH 7.3, 10% glycerol |
| Preparation: | Recombinant protein was captured through anti-DDK affinity column followed by conventional chromatography steps. |
| Note: | For testing in cell culture applications, please filter before use. Note that you may experience some loss of protein during the filtration process. |
| Storage: | Store at -80°C. |
| Stability: | Stable for 12 months from the date of receipt of the product under proper storage and handling conditions. Avoid repeated freeze-thaw cycles. |
| RefSeq: | <u>NP_001099048</u> |
| Locus ID: | 256126 |



[View online »](#)

UniProt ID: [Q6PIF2](#)

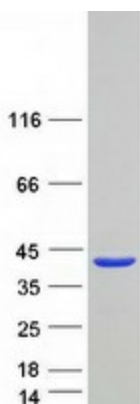
Cytogenetics: 19p13.13

RefSeq ORF: 654

Synonyms: CESC1

Summary: The protein encoded by this gene is part of the synaptonemal complex formed between homologous chromosomes during meiotic prophase. The encoded protein associates with SYCP1 and SYCE1 and is found only where chromosome cores are synapsed. [provided by RefSeq, Dec 2012]

Product images:



Coomassie blue staining of purified SYCE2 protein (Cat# TP325261). The protein was produced from HEK293T cells transfected with SYCE2 cDNA clone (Cat# [RC225261]) using MegaTran 2.0 (Cat# [TT210002]).