

Product datasheet for **TP325253**

MAD2L2 (NM_001127325) Human Recombinant Protein

Product data:

Product Type:	Recombinant Proteins
Description:	Recombinant protein of human MAD2 mitotic arrest deficient-like 2 (yeast) (MAD2L2), transcript variant 1, 20 µg
Species:	Human
Expression Host:	HEK293T
Expression cDNA Clone or AA Sequence:	>RC225253 protein sequence Red =Cloning site Green =Tags(s)
	 MTTLTRQDLNFGQWVADVLCFLEVAVHLILYVREVYPVGIFQKRKKYNVPVQMSCHPELNQYIQDTLHC VKPLLEKNDVEKVVVILDKEHRPVEKFVFEITQPPLLSISSDSLLSHVEQLLRAFILKISVCDVLDHN PPGCTFTVLVHTREAATRNMEDIQVIKDFPWILADEQDVHMHDPRLIPLKTMSTDILKMQLYVEERAHKG S TRTRPLEQKLISEEDLAANDILDYKDDDDKV
Tag:	C-Myc/DDK
Predicted MW:	24.2 kDa
Concentration:	>0.05 µg/µL as determined by microplate BCA method
Purity:	> 80% as determined by SDS-PAGE and Coomassie blue staining
Buffer:	25 mM Tris-HCl, 100 mM glycine, pH 7.3, 10% glycerol
Preparation:	Recombinant protein was captured through anti-DDK affinity column followed by conventional chromatography steps.
Note:	For testing in cell culture applications, please filter before use. Note that you may experience some loss of protein during the filtration process.
Storage:	Store at -80°C.
Stability:	Stable for 12 months from the date of receipt of the product under proper storage and handling conditions. Avoid repeated freeze-thaw cycles.
RefSeq:	<u>NP_001120797</u>
Locus ID:	10459



[View online »](#)

UniProt ID: [Q9UI95](#), [A0A024R4I4](#)

RefSeq Size: 1196

Cytogenetics: 1p36.22

RefSeq ORF: 633

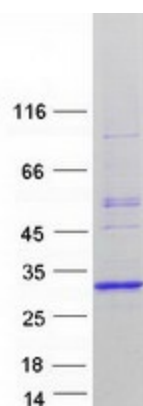
Synonyms: FANCV; MAD2B; POLZ2; REV7

Summary: The protein encoded by this gene is a component of the mitotic spindle assembly checkpoint that prevents the onset of anaphase until all chromosomes are properly aligned at the metaphase plate. The encoded protein, which is similar to MAD2L1, is capable of interacting with ADAM9, ADAM15, REV1, and REV3 proteins. [provided by RefSeq, Jul 2008]

Protein Families: Druggable Genome

Protein Pathways: Cell cycle, Oocyte meiosis, Progesterone-mediated oocyte maturation

Product images:



Coomassie blue staining of purified MAD2L2 protein (Cat# TP325253). The protein was produced from HEK293T cells transfected with MAD2L2 cDNA clone (Cat# [RC225253]) using MegaTran 2.0 (Cat# [TT210002]).