

## Product datasheet for **TP325208M**

### HP1 alpha (CBX5) (NM\_001127321) Human Recombinant Protein

#### Product data:

Product Type:	Recombinant Proteins
Description:	Recombinant protein of human chromobox homolog 5 (HP1 alpha homolog, Drosophila) (CBX5), transcript variant 2, 100 µg
Species:	Human
Expression Host:	HEK293T
Expression cDNA Clone or AA Sequence:	>RC225208 protein sequence <b>Red</b> =Cloning site <b>Green</b> =Tags(s)

MGKKT~~RTADSSSEDEEEY~~WVEKVLDRRVVKGQVEYLLKWKGFSEEHNTWEPEKNLDCPELISEFMKKY  
KKMKEG~~ENNKPREKSESNKRKSNFSNSADDIKSKKKREQSNDIARGFERGLEPEKIIGATDSCGDL~~MFLM  
KWKDTDEADLVLAKEANVKCPQIVIAFYEERLTWHAYPEDAENKEKETAKS

**TR**TRPLEQKLISEEDLAANDILDYKDDDDKV

Tag:	C-Myc/DDK
Predicted MW:	22 kDa
Concentration:	>0.05 µg/µL as determined by microplate BCA method
Purity:	> 80% as determined by SDS-PAGE and Coomassie blue staining
Buffer:	25 mM Tris-HCl, 100 mM glycine, pH 7.3, 10% glycerol
Preparation:	Recombinant protein was captured through anti-DDK affinity column followed by conventional chromatography steps.
Note:	For testing in cell culture applications, please filter before use. Note that you may experience some loss of protein during the filtration process.
Storage:	Store at -80°C.
Stability:	Stable for 12 months from the date of receipt of the product under proper storage and handling conditions. Avoid repeated freeze-thaw cycles.
RefSeq:	<a href="#">NP_001120793</a>
Locus ID:	23468
UniProt ID:	<a href="#">P45973</a> , <a href="#">V9HWG0</a>

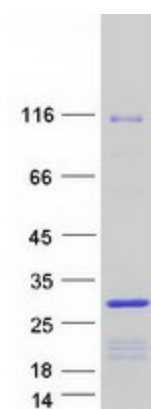


[View online »](#)

RefSeq Size:	11525
Cytogenetics:	12q13.13
RefSeq ORF:	573
Synonyms:	HEL25; HP1; HP1A

**Summary:** This gene encodes a highly conserved nonhistone protein, which is a member of the heterochromatin protein family. The protein is enriched in the heterochromatin and associated with centromeres. The protein has a single N-terminal chromodomain which can bind to histone proteins via methylated lysine residues, and a C-terminal chromo shadow-domain (CSD) which is responsible for the homodimerization and interaction with a number of chromatin-associated nonhistone proteins. The encoded product is involved in the formation of functional kinetochore through interaction with essential kinetochore proteins. The gene has a pseudogene located on chromosome 3. Multiple alternatively spliced variants, encoding the same protein, have been identified. [provided by RefSeq, Jul 2008]

### Product images:



Coomassie blue staining of purified CBX5 protein (Cat# [TP325208]). The protein was produced from HEK293T cells transfected with CBX5 cDNA clone (Cat# [RC225208]) using MegaTran 2.0 (Cat# [TT210002]).