

## Product datasheet for TP325202

### p21 Ras (HRAS) (NM\_001130442) Human Recombinant Protein

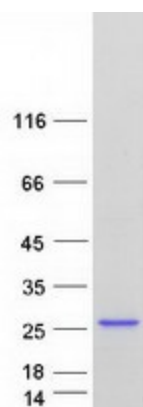
#### Product data:

|                                       |  |
|---------------------------------------|--|
| Product Type:                         | Recombinant Proteins   |
| Description:                          | Recombinant protein of human v-Ha-ras Harvey rat sarcoma viral oncogene homolog (HRAS), transcript variant 3, 20 µg  |
| Species:                              | Human  |
| Expression Host:                      | HEK293T  |
| Expression cDNA Clone or AA Sequence: | >RC225202 representing NM_001130442<br><span style="color: red;">Red</span> =Cloning site <span style="color: green;">Green</span> =Tags(s)<br><br>MTEYKLWVGAGGVGKSALTIQLIQNHFVDEYDPTIEDSYRKQWIDGETCLLDILDITAGQEEYSAMRDQ<br>YMRTGEGFLCVFAINNTKSFEDIHQYREQIKRVKDSDDVPMVLVGNKCDLAARTVESRQAQDLVRSYGIP<br>YIETSAKTRQGVEDAFYTLVREIRQHKLRLNPPDESGPGCMSCKCVLS<br><br><span style="color: red;">TR</span> <span style="color: green;">TRPLEQKLISEEDLAANDILDYKDDDDKV</span> |
| Tag:                                  | C-Myc/DDK  |
| Predicted MW:                         | 21.1 kDa   |
| Concentration:                        | >0.05 µg/µL as determined by microplate BCA method   |
| Purity:                               | > 80% as determined by SDS-PAGE and Coomassie blue staining  |
| Buffer:                               | 25 mM Tris-HCl, 100 mM glycine, pH 7.3, 10% glycerol   |
| Preparation:                          | Recombinant protein was captured through anti-DDK affinity column followed by conventional chromatography steps.   |
| Note:                                 | For testing in cell culture applications, please filter before use. Note that you may experience some loss of protein during the filtration process.   |
| Storage:                              | Store at -80°C.  |
| Stability:                            | Stable for 12 months from the date of receipt of the product under proper storage and handling conditions. Avoid repeated freeze-thaw cycles.  |
| RefSeq:                               | <u><a href="#">NP_001123914</a></u>  |
| Locus ID:                             | 3265   |
| UniProt ID:                           | <u><a href="#">P01112</a></u>  |


[View online »](#)

|                          |  |
|--------------------------|--|
| <b>Cytogenetics:</b>     | 11p15.5  |
| <b>RefSeq ORF:</b>       | 567  |
| <b>Synonyms:</b>         | C-BAS/HAS; C-H-RAS; C-HA-RAS1; CTLO; H-RASIDX; HAMSV; HRAS1; p21ras; RASH1   |
| <b>Summary:</b>          | This gene belongs to the Ras oncogene family, whose members are related to the transforming genes of mammalian sarcoma retroviruses. The products encoded by these genes function in signal transduction pathways. These proteins can bind GTP and GDP, and they have intrinsic GTPase activity. This protein undergoes a continuous cycle of de- and re-palmitoylation, which regulates its rapid exchange between the plasma membrane and the Golgi apparatus. Mutations in this gene cause Costello syndrome, a disease characterized by increased growth at the prenatal stage, growth deficiency at the postnatal stage, predisposition to tumor formation, cognitive disability, skin and musculoskeletal abnormalities, distinctive facial appearance and cardiovascular abnormalities. Defects in this gene are implicated in a variety of cancers, including bladder cancer, follicular thyroid cancer, and oral squamous cell carcinoma. Multiple transcript variants, which encode different isoforms, have been identified for this gene. [provided by RefSeq, Jul 2008] |
| <b>Protein Families:</b> | Druggable Genome   |
| <b>Protein Pathways:</b> | Acute myeloid leukemia, Axon guidance, B cell receptor signaling pathway, Bladder cancer, Chemokine signaling pathway, Chronic myeloid leukemia, Endocytosis, Endometrial cancer, ErbB signaling pathway, Fc epsilon RI signaling pathway, Focal adhesion, Gap junction, Glioma, GnRH signaling pathway, Insulin signaling pathway, Long-term depression, Long-term potentiation, MAPK signaling pathway, Melanogenesis, Melanoma, Natural killer cell mediated cytotoxicity, Neurotrophin signaling pathway, Non-small cell lung cancer, Pathways in cancer, Prostate cancer, Regulation of actin cytoskeleton, Renal cell carcinoma, T cell receptor signaling pathway, Thyroid cancer, Tight junction, VEGF signaling pathway   |

## Product images:



Coomassie blue staining of purified HRAS protein (Cat# TP325202). The protein was produced from HEK293T cells transfected with HRAS cDNA clone (Cat# [RC225202]) using MegaTran 2.0 (Cat# [TT210002]).