

## Product datasheet for **TP325182M**

### CLEC2A (NM\_001130711) Human Recombinant Protein

#### Product data:

**Product Type:** Recombinant Proteins

**Description:** Purified recombinant protein of Homo sapiens C-type lectin domain family 2, member A (CLEC2A), 100 µg

**Species:** Human

**Expression Host:** HEK293T

**Expression cDNA Clone or AA Sequence:** >RC225182 representing NM\_001130711  
**Red**=Cloning site **Green**=Tags(s)

MINPELRDGRADGFIHRIVPKLIQNWKIGLMCFLSIITTVCIIMIATWSKHAKPVACSGDWLGVRDKCF  
YFSDDTRNWTASKIFCSLQKAELAQIDTQEDMEFLKRYAGTDMHWIGLSRKQGDSWKWTNGTTFNGWFEI  
IGNGSFAFLSADGVHSSRGFIDIKWICKPKYFL

**TR**TRPLE**Q**KLISEEDLAANDILDY**K**DDDD**KV**

**Tag:** C-Myc/DDK

**Predicted MW:** 19.8 kDa

**Concentration:** >0.05 µg/µL as determined by microplate BCA method

**Purity:** > 80% as determined by SDS-PAGE and Coomassie blue staining

**Buffer:** 25 mM Tris-HCl, 100 mM glycine, pH 7.3, 10% glycerol

**Preparation:** Recombinant protein was captured through anti-DDK affinity column followed by conventional chromatography steps.

**Note:** For testing in cell culture applications, please filter before use. Note that you may experience some loss of protein during the filtration process.

**Storage:** Store at -80°C.

**Stability:** Stable for 12 months from the date of receipt of the product under proper storage and handling conditions. Avoid repeated freeze-thaw cycles.

**RefSeq:** [NP\\_001124183](#)

**Locus ID:** 387836

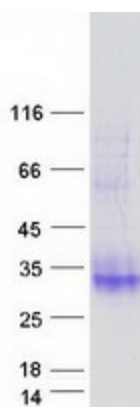
**UniProt ID:** [Q6UVW9](#)



[View online »](#)

Cytogenetics:	12p13.31
RefSeq ORF:	522
Synonyms:	INPE5792; KACL; PILAR; UNQ5792
Summary:	CLEC2A belongs to the CLEC2 family of activation-induced, natural killer gene complex-encoded C-type lectin-like receptors (Spreu et al., 2007 [PubMed 18046548]).[supplied by OMIM, May 2008]

### Product images:



Coomassie blue staining of purified CLEC2A protein (Cat# [TP325182]). The protein was produced from HEK293T cells transfected with CLEC2A cDNA clone (Cat# [RC225182]) using MegaTran 2.0 (Cat# [TT210002]).