

Product datasheet for TP325182L

CLEC2A (NM_001130711) Human Recombinant Protein

Product data:

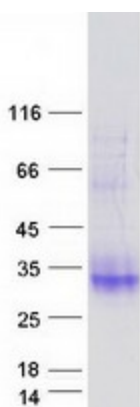
Product Type:	Recombinant Proteins
Description:	Purified recombinant protein of Homo sapiens C-type lectin domain family 2, member A (CLEC2A), 1 mg
Species:	Human
Expression Host:	HEK293T
Expression cDNA Clone or AA Sequence:	>RC225182 representing NM_001130711 Red=Cloning site Green=Tags(s)
	 MINPELRDGRADGFIHRIVPKLIQNWKIGLMCFLSIITTVCIIMIATWSKHAKPVACSGDWLGVRDKCF YFSDDTRNWTASKIFCSLQKAELAQIDTQEDMEFLKRYAGTDMHWIGLSRKQGDSWKWTNGTTFNGWFEI IGNGSFAFLSADGVHSSRGFIDIKWICKPKYFL TRTRPLEQKLISEEDLAANDILDYKDDDDKV
Tag:	C-Myc/DDK
Predicted MW:	19.8 kDa
Concentration:	>0.05 µg/µL as determined by microplate BCA method
Purity:	> 80% as determined by SDS-PAGE and Coomassie blue staining
Buffer:	25 mM Tris-HCl, 100 mM glycine, pH 7.3, 10% glycerol
Preparation:	Recombinant protein was captured through anti-DDK affinity column followed by conventional chromatography steps.
Note:	For testing in cell culture applications, please filter before use. Note that you may experience some loss of protein during the filtration process.
Storage:	Store at -80°C.
Stability:	Stable for 12 months from the date of receipt of the product under proper storage and handling conditions. Avoid repeated freeze-thaw cycles.
RefSeq:	NP_001124183
Locus ID:	387836
UniProt ID:	Q6UVW9



[View online »](#)

Cytogenetics:	12p13.31
RefSeq ORF:	522
Synonyms:	INPE5792; KACL; PILAR; UNQ5792
Summary:	CLEC2A belongs to the CLEC2 family of activation-induced, natural killer gene complex-encoded C-type lectin-like receptors (Spreu et al., 2007 [PubMed 18046548]).[supplied by OMIM, May 2008]

Product images:



Coomassie blue staining of purified CLEC2A protein (Cat# [TP325182]). The protein was produced from HEK293T cells transfected with CLEC2A cDNA clone (Cat# [RC225182]) using MegaTran 2.0 (Cat# [TT210002]).