

Product datasheet for **TP325082M**

KHDC1L (NM_001126063) Human Recombinant Protein

Product data:

| | |
|---------------------------------------|---|
| Product Type: | Recombinant Proteins |
| Description: | Recombinant protein of human hypothetical protein LOC100129128 (LOC100129128), 100 µg |
| Species: | Human |
| Expression Host: | HEK293T |
| Expression cDNA Clone or AA Sequence: | >RC225082 representing NM_001126063 Red =Cloning site Green =Tags(s) |

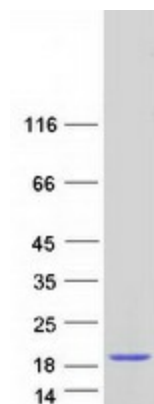
MAVGTSALSKEPWWTLPENFHSMPVFMHEEDQEELIFGLDDTYLRCEIHSHTLIQLERCFTATGQTRVT
VVGPPMAKQWLLLMFHCVGSQDSKCHARGLKMRLERVRSQPLTNDLVTSLPPYTGD

TRTRPLEQKLISEEDLAANDILDYKDDDDKV

| | |
|----------------|--|
| Tag: | C-Myc/DDK |
| Predicted MW: | 14.4 kDa |
| Concentration: | >0.05 µg/µL as determined by microplate BCA method |
| Purity: | > 80% as determined by SDS-PAGE and Coomassie blue staining |
| Buffer: | 25 mM Tris-HCl, 100 mM glycine, pH 7.3, 10% glycerol |
| Preparation: | Recombinant protein was captured through anti-DDK affinity column followed by conventional chromatography steps. |
| Note: | For testing in cell culture applications, please filter before use. Note that you may experience some loss of protein during the filtration process. |
| Storage: | Store at -80°C. |
| Stability: | Stable for 12 months from the date of receipt of the product under proper storage and handling conditions. Avoid repeated freeze-thaw cycles. |
| RefSeq: | NP_001119535 |
| Locus ID: | 100129128 |
| UniProt ID: | Q5ISQ8 |
| Cytogenetics: | 6q13 |
| RefSeq ORF: | 384 |



[View online »](#)

Product images:

Coomassie blue staining of purified KHDC1L protein (Cat# [TP325082]). The protein was produced from HEK293T cells transfected with KHDC1L cDNA clone (Cat# [RC225082]) using MegaTran 2.0 (Cat# [TT210002]).