

Product datasheet for **TP325082**

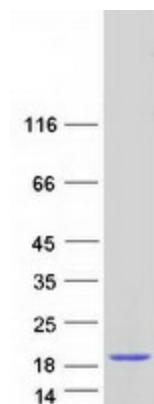
KHDC1L (NM_001126063) Human Recombinant Protein

Product data:

Product Type:	Recombinant Proteins
Description:	Recombinant protein of human hypothetical protein LOC100129128 (LOC100129128), 20 µg
Species:	Human
Expression Host:	HEK293T
Expression cDNA Clone or AA Sequence:	>RC225082 representing NM_001126063 Red =Cloning site Green =Tags(s)
	 MAVGTSALSKEPWWTLPENFHSMPVFMHEEDQEELIFGLDDTYLRCIELHSHTLIQLERCFTATGQTRVT VVGPPMAKQWLLLMFHCVGSQDSKCHARGLKMLERVRSQPLTNDLVTSLPPYTGD TRTRPLEQKLISEEDLAANDILDYKDDDDKV
Tag:	C-Myc/DDK
Predicted MW:	14.4 kDa
Concentration:	>0.05 µg/µL as determined by microplate BCA method
Purity:	> 80% as determined by SDS-PAGE and Coomassie blue staining
Buffer:	25 mM Tris-HCl, 100 mM glycine, pH 7.3, 10% glycerol
Preparation:	Recombinant protein was captured through anti-DDK affinity column followed by conventional chromatography steps.
Note:	For testing in cell culture applications, please filter before use. Note that you may experience some loss of protein during the filtration process.
Storage:	Store at -80°C.
Stability:	Stable for 12 months from the date of receipt of the product under proper storage and handling conditions. Avoid repeated freeze-thaw cycles.
RefSeq:	NP_001119535
Locus ID:	100129128
UniProt ID:	Q5ISQ8
Cytogenetics:	6q13
RefSeq ORF:	384



[View online »](#)

Product images:

Coomassie blue staining of purified KHDC1L protein (Cat# TP325082). The protein was produced from HEK293T cells transfected with KHDC1L cDNA clone (Cat# [RC225082]) using MegaTran 2.0 (Cat# [TT210002]).