

Product datasheet for **TP325061L**

YPEL5 (NM_001127401) Human Recombinant Protein

Product data:

| | |
|---------------------------------------|--|
| Product Type: | Recombinant Proteins |
| Description: | Purified recombinant protein of Homo sapiens yippee-like 5 (Drosophila) (YPEL5), transcript variant 1, 1 mg |
| Species: | Human |
| Expression Host: | HEK293T |
| Expression cDNA Clone or AA Sequence: | >RC225061 protein sequence Red =Cloning site Green =Tags(s) |
| | MGRIFLDHIGGTRLFSCANCDTILNRSSELISTRFTGATGRAFLFNKWNLQYSEVQDRVMLTGRHMVRD VSCKNCNSKLGWIYEFATEDSQRYKEGRVILERALVRESEGFEEHVPSDNS |
| | TRTRPLEQKLISEEDLAANDILDYKDDDDKV |
| Tag: | C-Myc/DDK |
| Predicted MW: | 13.7 kDa |
| Concentration: | >0.05 µg/µL as determined by microplate BCA method |
| Purity: | > 80% as determined by SDS-PAGE and Coomassie blue staining |
| Buffer: | 25 mM Tris-HCl, 100 mM glycine, pH 7.3, 10% glycerol |
| Preparation: | Recombinant protein was captured through anti-DDK affinity column followed by conventional chromatography steps. |
| Note: | For testing in cell culture applications, please filter before use. Note that you may experience some loss of protein during the filtration process. |
| Storage: | Store at -80°C. |
| Stability: | Stable for 12 months from the date of receipt of the product under proper storage and handling conditions. Avoid repeated freeze-thaw cycles. |
| RefSeq: | NP_001120873 |
| Locus ID: | 51646 |
| UniProt ID: | P62699 |
| RefSeq Size: | 2639 |



[View online »](#)

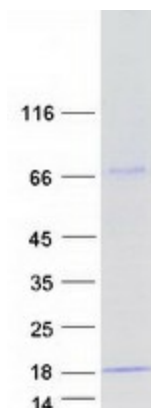
Cytogenetics: 2p23.1

RefSeq ORF: 363

Synonyms: CGI-127

Summary: Component of the CTLH E3 ubiquitin-protein ligase complex that selectively accepts ubiquitin from UBE2H and mediates ubiquitination and subsequent proteasomal degradation of the transcription factor HBP1 (PubMed:29911972). Required for normal cell proliferation (By similarity).[UniProtKB/Swiss-Prot Function]

Product images:



Coomassie blue staining of purified YPEL5 protein (Cat# [TP325061]). The protein was produced from HEK293T cells transfected with YPEL5 cDNA clone (Cat# [RC225061]) using MegaTran 2.0 (Cat# [TT210002]).